



Price
£275,000

Freehold

3x  2x  1x 

**Mount Field,
Queenborough, Kent,
ME11**

OVER 60?

Secure this property
for up to **59% less!**

Wards
Helping you move forwards



Main features

- Fabulous open plan lounge/kitchen area
- Two allocated parking spaces
- Walk around the corner to the Co-op
- Railway station just around the corner
- En-Suite Shower room to main bedroom
- Useful downstairs cloakroom

Accommodation

GROUND FLOOR

Entrance Hall
Downstairs Cloakroom: 5'4 x 3'7 (1.63m x 1.09m)
Lounge/Dining Area: 16'3 x 15'6 (4.96m x 4.73m)
Kitchen: 12'2 x 9'1 (3.71m x 2.77m)

FIRST FLOOR

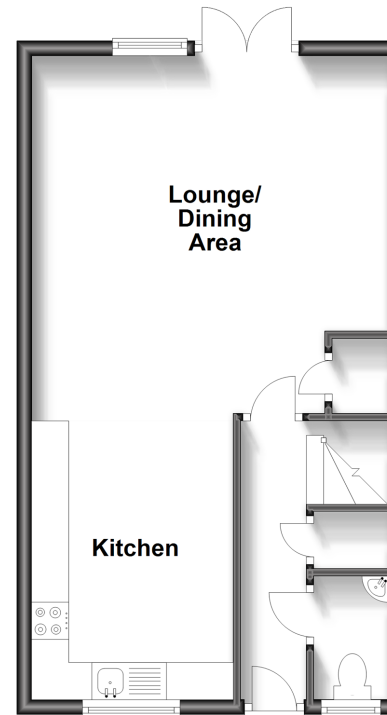
Landing
Bedroom 1: 12'3 x 11'5 (3.74m x 3.48m)
En-Suite Shower Room: 8'2 x 5'6 (2.49m x 1.68m)
Bedroom 2: 12'5 x 7'8 (3.79m x 2.34m)
Bedroom 3: 8'1 x 7'5 (2.47m x 2.26m)
Bathroom: 8'2 x 4'6 (2.49m x 1.37m)

OUTSIDE

Front Garden
Rear Garden
Two Allocated Parking Spaces

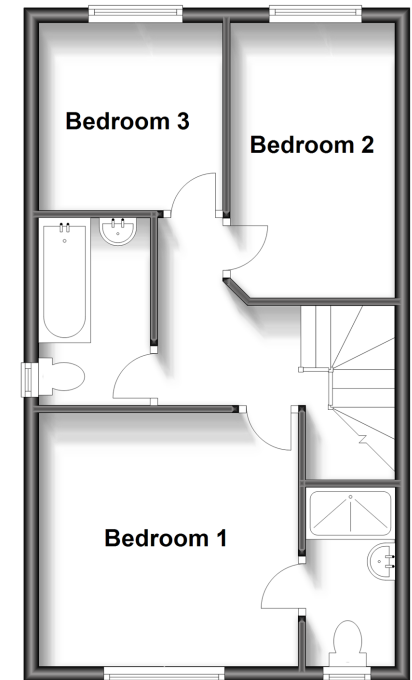
Ground Floor

Approx. 41.4 sq. metres (446.0 sq. feet)



First Floor

Approx. 41.4 sq. metres (446.0 sq. feet)



Call Sheerness - 01795 664651 ■ wardsofkent.co.uk

■ Legal advice should be taken to verify fixtures/fittings, planning, alterations and/or lease details
■ Through a Homewise Home For Life Plan people aged 60+ can secure this property for up to 59% less, by purchasing a Lifetime Lease.

■ Appliances & services are untested, dimensions are approximate and floor plans are not to scale



11634675/20230715/DS/PA