



OVER 60?

Secure this property
for up to **59% less!**



Video Tour available

Price

£325,000

Freehold

3x  2x  1x 

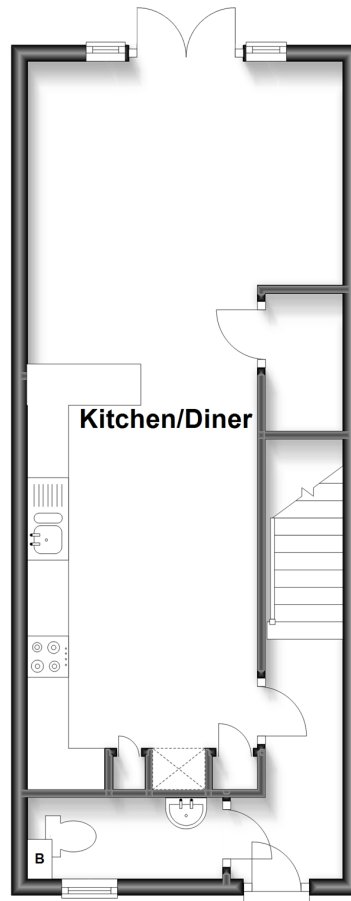
Cornflower Way, Minster

On Sea, Kent, ME12

Wards
Helping you move forwards

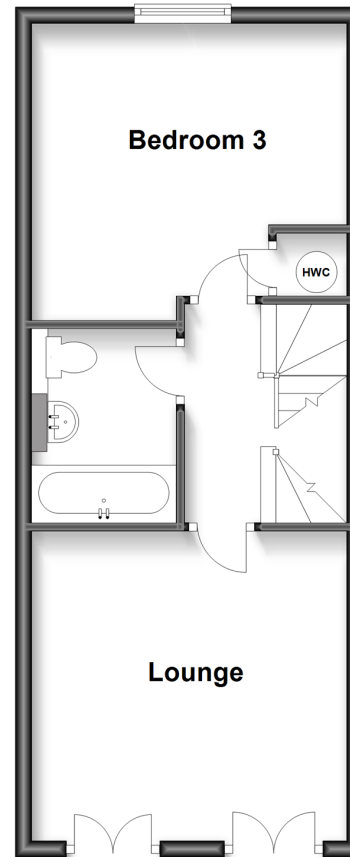
Ground Floor

Approx. 38.2 sq. metres (410.9 sq. feet)



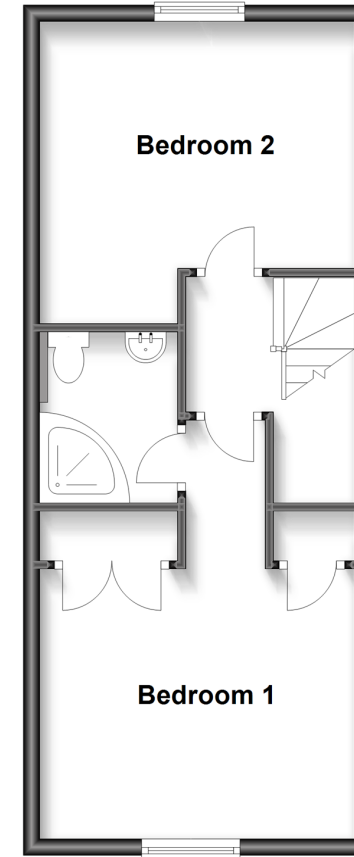
First Floor

Approx. 38.2 sq. metres (410.9 sq. feet)



Second Floor

Approx. 38.2 sq. metres (410.9 sq. feet)



Accommodation

GROUND FLOOR

Entrance Hall

Downstairs Cloakroom: 7'5 x 3'5 (2.26m x 1.04m)

Kitchen/Diner: 24'10 x 12'4 (7.57m x 3.76m)

FIRST FLOOR

Landing

Lounge: 12'9 x 12'5 (3.89m x 3.79m)

Bedroom 3: 12'4 x 10'4 (3.76m x 3.15m)

Bathroom: 8'0 x 6'0 (2.44m x 1.83m)

SECOND FLOOR

Landing

Bedroom 1: 16'8 x 10'6 (5.08m x 3.20m)

En-suite Shower Room: 7'0 x 5'7 (2.14m x 1.70m)

Bedroom 2: 12'6 x 11'2 (3.81m x 3.41m)

OUTSIDE

Front Garden

Rear Garden

Carport



Main features

- Take a hot bubble bath or use the en-suite shower
- Handy downstairs cloakroom ideal for guests
- Take advantage of the double door Juliet balcony overlooking the woodland
- Drive into the covered carport located at the rear of the garden
- Local convenience store just down the road



Nearest Schools

Primary Schools: Minster in Sheppey Primary 1.4 miles, Halfway Houses Primary 1.5 miles

Secondary Schools: Oasis Academy 1.1 miles, The Westlands School 7.9 miles



Transport Information

Train Stations: Queenborough 3.0 miles, Sheerness-on-Sea 3.1 miles, Swale 3.4 miles



Address

Cornflower Way, Minster On Sea, Kent, ME12



Directions

For directions to this property please contact us.



Wards
Helping you move forwards

Call Sheerness Branch 01795 664651 ■ wardsofkent.co.uk



■ Legal advice should be taken to verify fixtures/fittings, planning, alterations and/or lease details ■ Appliances & services are untested, dimensions are approximate and floor plans are not to scale
■ Through a Homewise Home For Life Plan people aged 60+ can secure this property for up to 59% less, by purchasing a Lifetime Lease.



11634697/20230206/DS/PA