



Price
£500,000

Freehold

5x  2x  2x 

**Southdown Road,
Minster On Sea, Kent,
ME12**

OVER 60?

Secure this property
for up to **59% less!**

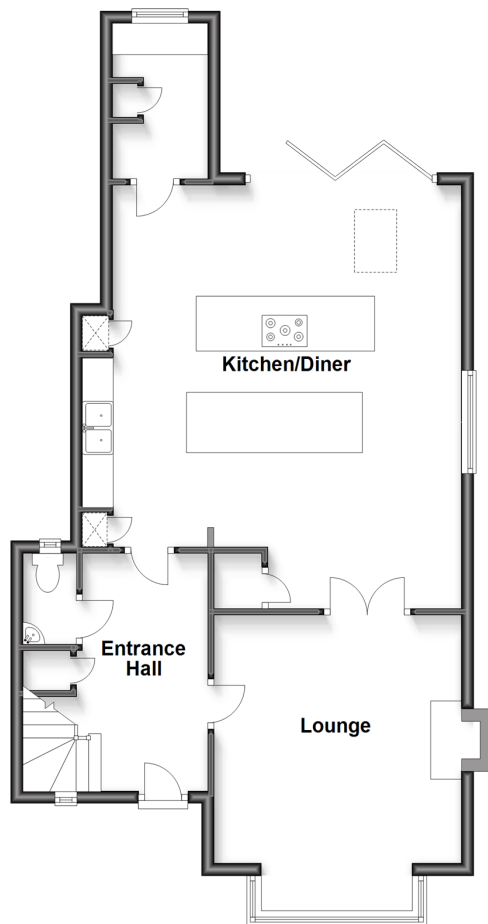


Video Tour available

Wards
Helping you move forwards

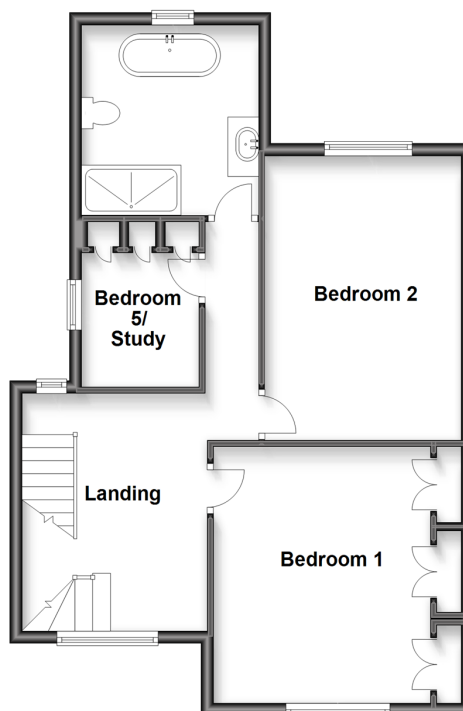
Ground Floor

Approx. 71.6 sq. metres (771.2 sq. feet)



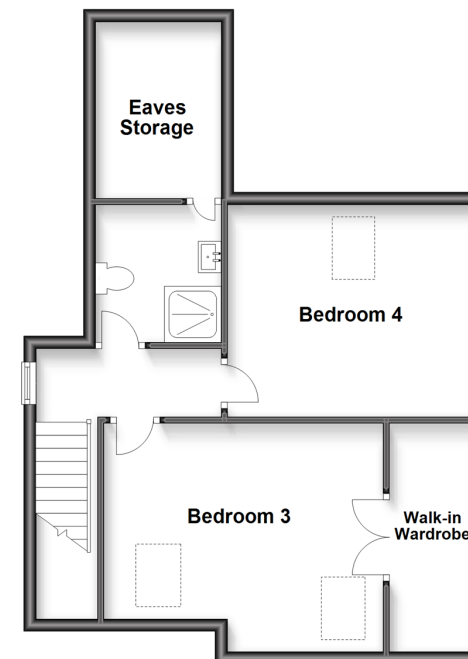
First Floor

Approx. 60.9 sq. metres (655.5 sq. feet)



Second Floor

Approx. 52.9 sq. metres (569.1 sq. feet)



Accommodation

GROUND FLOOR

Entrance Hall

Downstairs Cloakroom/W.C.: 5'1 x 2'8 (1.55m x 0.81m)

Lounge: 16'0 (4.88m) x 13'8 (4.17m) narrowing to 12'11 (3.94m)

Kitchen/Diner: 19'1 x 18'9 (5.82m x 5.72m)

Utility Room: 7'8 x 4'1 (2.34m x 1.25m)

FIRST FLOOR

Landing

Bedroom 1: 15'0 x 10'5 (4.58m x 3.18m)

Bedroom 2: 13'2 x 11'0 (4.02m x 3.36m)

Bedroom 5/Study: 6'4 x 6'0 (1.93m x 1.83m)

Bathroom: 9'1 x 8'3 (2.77m x 2.52m)

SECOND FLOOR

Landing

Bedroom 3: 13'1 x 11'0 (3.99m x 3.36m)

Bedroom 4: 9'1 x 8'3 (2.77m x 2.52m)

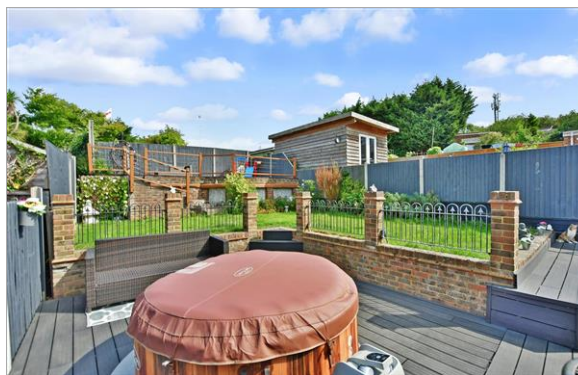
Shower Room: 8'3 x 6'11 (2.52m x 2.11m)

OUTSIDE

Front Garden

Rear Garden

Side Garden(With Gates)



Main features

- A stunning kitchen with 2 central islands in the Kitchen
- Shower Room plus a separate bathroom and downstairs cloakroom
- Tucked out of the way on a No through road
- Fabulous throughout from floor coverings to decoration
- Lovely size garden plus a plot to the right hand side and Workshop



Nearest Schools

Primary Schools: Halfway Houses Primary 0.2 miles, St Edward's Catholic Primary 1.5 miles, Richmond Primary 1.6 miles

Secondary Schools: Oasis Academy 0.7 miles, Fulston



Transport Information

Train Stations: Queenborough 1.8 miles, Sheerness-on-Sea 2.0 miles, Swale 3.8 miles



Address

Southdown Road, Minster On Sea, Kent, ME12



Directions

For directions to this property please contact us.



Wards
Helping you move forwards

Call Sheerness Branch 01795 664651 ■ wardsofkent.co.uk



■ Legal advice should be taken to verify fixtures/fittings, planning, alterations and/or lease details ■ Appliances & services are untested, dimensions are approximate and floor plans are not to scale
■ Through a Homewise Home For Life Plan people aged 60+ can secure this property for up to 59% less, by purchasing a Lifetime Lease.



11634706/20230127/DS/PA