



OVER 60?

Secure this property
for up to **59% less!**

Price

£460,000

Freehold

4x  2x  2x 

**Princes Avenue,
Minster-On-Sea, Kent,
ME12**

Wards
Helping you move forwards



Main features

- Landscaped garden with bespoke bar area ideal for parties
- Kitchen with fitted appliances
- Beautiful throughout with luxurious floor coverings
- Walk to the end of the road and down the steps to the beach
- Renovation works include kitchen, bathroom and en-suite

Accommodation

GROUND FLOOR

Entrance Hallway: 10'2 x 4'6 (3.10m x 1.37m)

Lounge: 18'6 x 17'1 (5.64m x 5.21m)

Dining Room: 19'7 (5.97m) narrowing to 16'2 (4.93m) x 10'4 (3.15m)

Kitchen: 11'9 x 9'4 (3.58m x 2.85m)

FIRST FLOOR

Landing

Bedroom 1: 17'3 into recess (5.26m) narrowing to 12'6 up to recess (3.81m) x 7'8 (2.34m)

En-suite Shower Room: 6'7 (2.01m) x 5'8 (1.73m) narrowing to 5'3 (1.60m)

Bedroom 2: 13'1 x 9'9 (3.99m x 2.97m)

Walk In Wardrobe: 4'3 x 4'3 (1.30m x 1.30m)

Bedroom 3: 13'1 x 9'9 (3.99m x 2.97m)

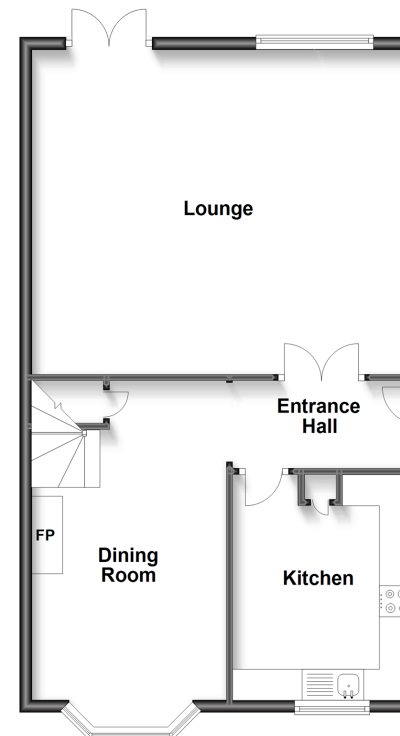
Bedroom 4: 9'9 x 9'3 (2.97m x 2.82m)

Bathroom: 7'3 x 6'7 (2.21m x 2.01m)

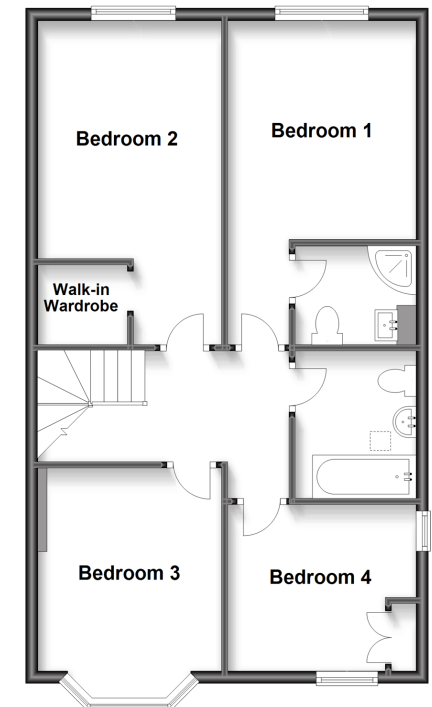
OUTSIDE

Front Garden
Front Driveway
Rear Garden

Ground Floor
Approx. 64.6 sq. metres (694.9 sq. feet)



First Floor
Approx. 64.6 sq. metres (694.9 sq. feet)



Call Sheerness - 01795 664651 ■ wardsforkent.co.uk

- Legal advice should be taken to verify fixtures/fittings, planning, alterations and/or lease details
- Appliances & services are untested, dimensions are approximate and floor plans are not to scale
- Through a Homewise Home For Life Plan people aged 60+ can secure this property for up to 59% less, by purchasing a Lifetime Lease.



11634754/20230118/DS/PA