



**OVER 60?**

Secure this property  
for up to **59% less!**

**Price**

**£300,000**

**Freehold**

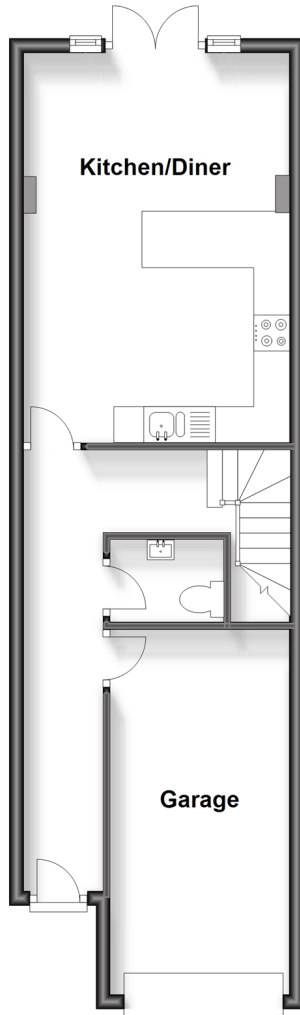
3x  2x  1x 

**Mount Field,  
Queenborough, Kent,  
ME11**

*Wards*  
Helping you move forwards

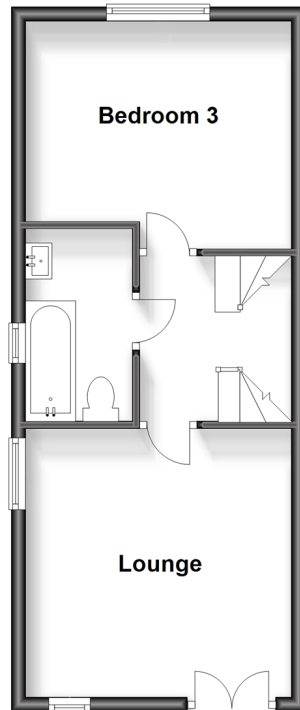
### Ground Floor

Approx. 47.1 sq. metres (506.7 sq. feet)



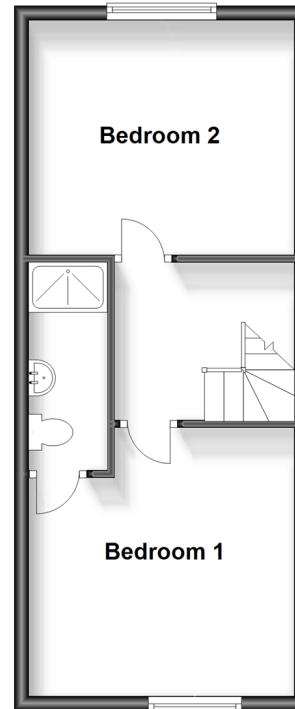
### First Floor

Approx. 35.1 sq. metres (377.3 sq. feet)



### Second Floor

Approx. 35.1 sq. metres (377.3 sq. feet)



## Accommodation

### GROUND FLOOR

Entrance Hall

Downstairs Cloakroom: 5'4 x 3'9 (1.63m x 1.14m)

Kitchen/Diner: 18'0 x 13'0 (5.49m x 3.97m)

### FIRST FLOOR

Landing

Lounge with Outside Balcony: 13'2 x 12'9 (4.02m x 3.89m)

Bedroom 3: 13'0 x 10'6 (3.97m x 3.20m)

Bathroom: 8'0 x 4'2 (2.44m x 1.27m)

### SECOND FLOOR

Landing

Bedroom 1: 13'2 x 12'8 (4.02m x 3.86m)

En-Suite Shower Room: 9'5 x 4'5 (2.87m x 1.35m)

Bedroom 2: 13'3 x 10'6 (4.04m x 3.20m)

### OUTSIDE

Front Garden

Rear Garden

Integral Garage: 16'7 x 8'2 (5.06m x 2.49m)

Off Road Parking





## Main features

- Useful personal door from the hallway to the garage
- Use the lounge on the 1st floor as bedroom 4 if required
- A fabulous balcony off of the lounge to sit out on with a coffee
- Built in oven, hob and extractor fan
- Useful downstairs cloakroom, a family bathroom plus an en-suite shower room



### Nearest Schools

Primary Schools: Halfway Houses Primary 1.4 miles, Minster in Sheppey Primary 2.4 miles, Richmond Primary 2.8 miles

Secondary Schools: Oasis Academy 2.0 miles



### Transport Information

Train Stations: Queenborough 0.5 miles, Swale 3.1 miles, Sheerness-on-Sea 3.2 miles



### Address

Mount Field, Queenborough, Kent, ME11



### Directions

For directions to this property please contact us.





*Wards*  
Helping you move forwards

Call Sheerness Branch 01795 664651 ■ [wardsofkent.co.uk](http://wardsofkent.co.uk)



■ Legal advice should be taken to verify fixtures/fittings, planning, alterations and/or lease details ■ Appliances & services are untested, dimensions are approximate and floor plans are not to scale  
■ Through a Homewise Home For Life Plan people aged 60+ can secure this property for up to 59% less, by purchasing a Lifetime Lease.



11634772/20230715/DS/PA