



**Price**  
**£290,000**

**Freehold**

3x  1x  2x 

**Mount Field,  
Queenborough, Kent,  
ME11**

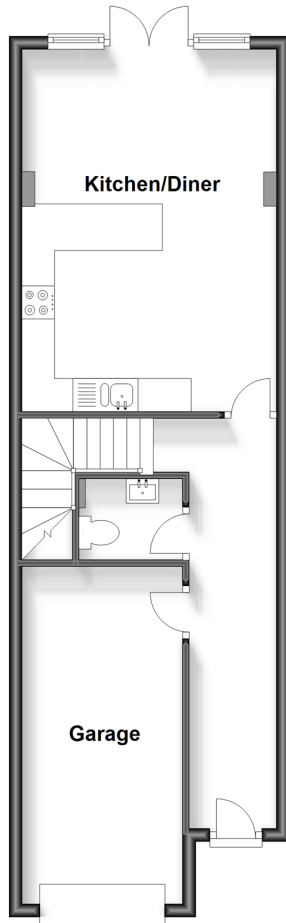
**OVER 60?**

Secure this property  
for up to **59% less!**

*Wards*  
Helping you move forwards

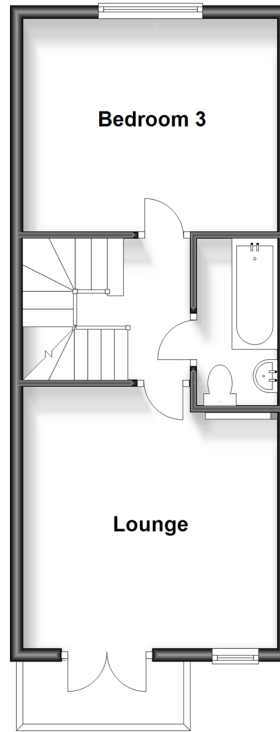
### Ground Floor

Approx. 48.9 sq. metres (526.5 sq. feet)



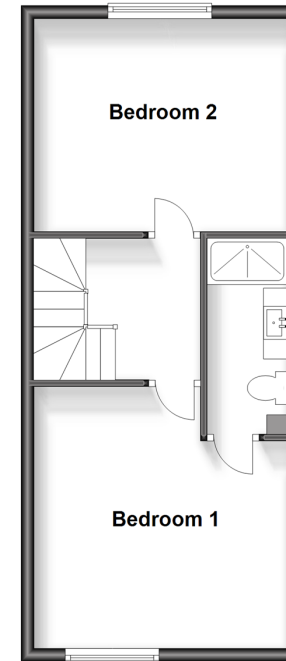
### First Floor

Approx. 37.3 sq. metres (401.0 sq. feet)



### Second Floor

Approx. 37.3 sq. metres (401.0 sq. feet)



## Accommodation

### GROUND FLOOR

Downstairs Cloakroom: 5'2 x 4'1 (1.58m x 1.25m)

Entrance Hall

Kitchen/Diner: 18'1 x 12'9 (5.52m x 3.89m)

### FIRST FLOOR

Landing

Bedroom 3: 12'9 x 10'6 (3.89m x 3.20m)

Bathroom: 8'4 x 4'2 (2.54m x 1.27m)

Lounge: 13'1 x 13'1 (3.99m x 3.99m)

### SECOND FLOOR

Landing

Bedroom 1: 13'3 x 13'0 (4.04m x 3.97m)

En-Suite Shower Room: 9'6 x 4'2 (2.90m x 1.27m)

Bedroom 2: 12'9 x 10'7 (3.89m x 3.23m)

### OUTSIDE

Integral Garage: 17'5 x 8'2 (5.31m x 2.49m)

Front Garden

Rear Garden



## Main features

- Useful personal door from the hallway to the garage
- You could use the lounge on the 1st floor as bedroom 4 if required
- Built in oven, hob & extractor fan
- A fabulous balcony off the lounge to sit out on and relax
- Useful downstairs cloakroom, a family bathroom plus an en-suite shower room



### Nearest Schools

Primary Schools: Halfway Houses Primary 1.4 miles, Minster in Sheppey Primary 2.4 miles, Richmond Primary 2.8 miles

Secondary Schools: Oasis Academy 2.0 miles



### Transport Information

Train Stations: Queenborough 0.5 miles, Swale 3.1 miles, Sheerness-on-Sea 3.2 miles



### Address

Mount Field, Queenborough, Kent, ME11



### Directions

For directions to this property please contact us.







Call Sheerness Branch 01795 664651 ■ [wardsofkent.co.uk](http://wardsofkent.co.uk)



- Legal advice should be taken to verify fixtures/fittings, planning, alterations and/or lease details
- Appliances & services are untested, dimensions are approximate and floor plans are not to scale
- Through a Homewise Home For Life Plan people aged 60+ can secure this property for up to 59% less, by purchasing a Lifetime Lease.



11634773/20230809/DS/PA