



Price
£325,000

Freehold

4x  2x  1x 

**Commodores Close,
Minster-On-Sea, Kent,
ME12**

OVER 60?

Secure this property
for up to **59% less!**

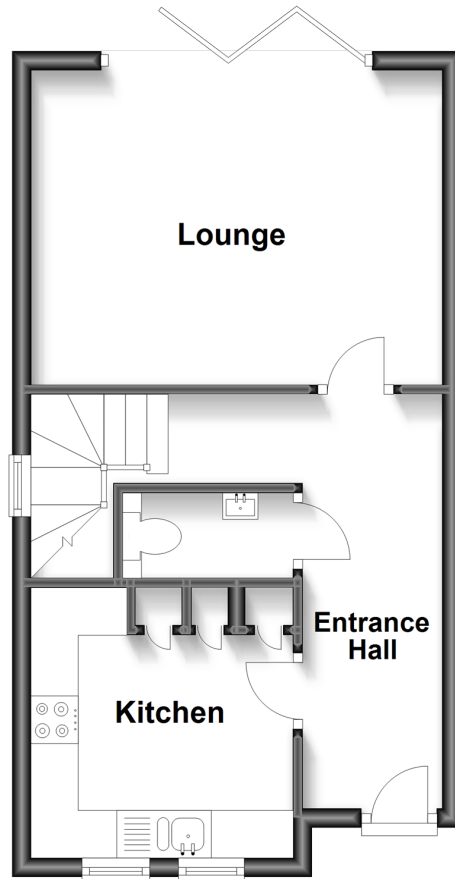


Video Tour available

Wards
Helping you move forwards

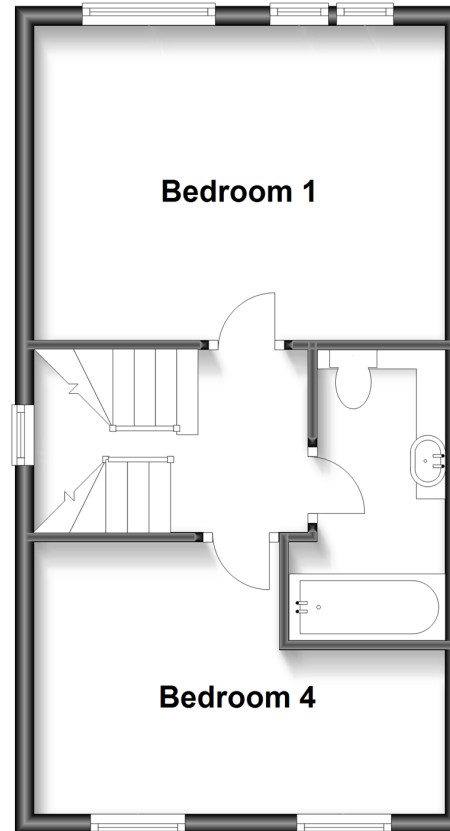
Ground Floor

Approx. 35.3 sq. metres (379.6 sq. feet)



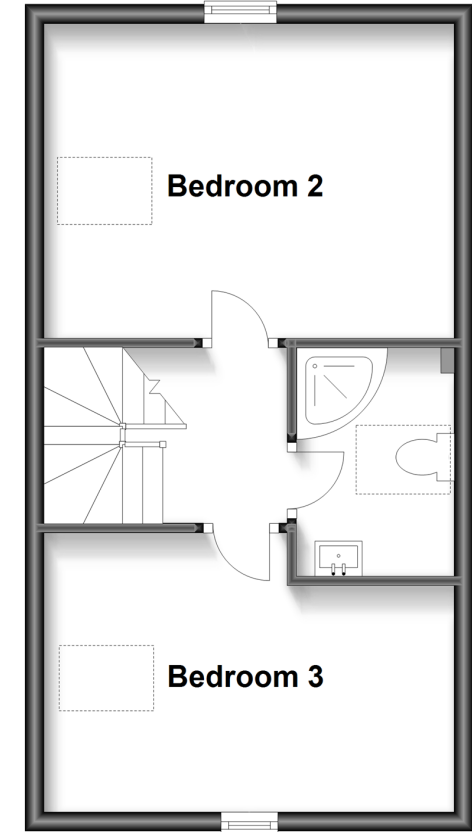
First Floor

Approx. 36.1 sq. metres (388.4 sq. feet)



Second Floor

Approx. 36.1 sq. metres (388.4 sq. feet)



Accommodation

GROUND FLOOR

Entrance Hall

Downstairs Cloakroom: 6'7 x 2'9 (2.01m x 0.84m)

Lounge: 14'5 x 11'2 (4.40m x 3.41m)

Kitchen: 9'6 x 9'2 (2.90m x 2.80m)

FIRST FLOOR

Landing

Bedroom 1: 14'5 x 11'8 (4.40m x 3.56m)

Bedroom 4: 14'5 x 9'7 (4.40m x 2.92m)

Bathroom: 10'0 (3.05m) narrowing to 4'5 (1.35m) x 5'6 (1.68m)

SECOND FLOOR

Landing

Bedroom 2: 14'7 x 11'2 (4.45m x 3.41m)

Bedroom 3: 15'6 (4.73m) narrowing to 9'7 (2.92m) x 7'9 (2.36m)

Shower Room: 8'2 x 5'6 (2.49m x 1.68m)

OUTSIDE

Front Garden

Front Driveway

Rear Garden



Main features

- 7 years left on the NHBC Guarantee (as of Jan 2023)
- All the bedrooms are great sizes
- Fabulous kitchen with built in washing machine, dishwasher, fridge/freezer and oven/hob
- Relax in the lounge and open up the bi-fold doors in the summer
- Family bathroom on the first floor plus a shower room on the second floor



Nearest Schools

Primary Schools: Halfway Houses Primary 0.2 miles, Minster in Sheppey Primary 1.0 miles, Richmond Primary 1.1 miles

Secondary Schools: Oasis Academy 0.1 miles

Transport Information

Train Stations: Queenborough 1.4 miles, Sheerness-on-Sea 1.7 miles, Swale 2.6 miles

Address

Commodores Close, Minster-On-Sea, Kent, ME12

Directions

For directions to this property please contact us.



Wards
Helping you move forwards

Call Sheerness Branch 01795 664651 ■ wardsofkent.co.uk



■ Legal advice should be taken to verify fixtures/fittings, planning, alterations and/or lease details ■ Appliances & services are untested, dimensions are approximate and floor plans are not to scale
■ Through a Homewise Home For Life Plan people aged 60+ can secure this property for up to 59% less, by purchasing a Lifetime Lease.



11634834/20240502/JLS/PA