



Price
£205,000

Freehold

3x  1x  2x 

**Alma Street, Sheerness,
Kent, ME12**

OVER 60?

Secure this property
for up to **59% less!**

Wards
Helping you move forwards



Main features

- Useful workshop at the bottom of the garden
- Lovely size lounge/diner
- All the bedrooms upstairs are separate
- Brand new bathroom includes both a bath and a shower cubicle
- Brand new kitchen with new hob, oven plus an extractor fan

Accommodation

GROUND FLOOR

Lounge/Diner: 25'11 x 13'9 (7.90m x 4.19m)

Kitchen: 10'7 x 7'4 (3.23m x 2.24m)

Lobby: 7'6 x 2'3 (2.29m x 0.69m)

Bathroom: 7'8 x 7'6 (2.34m x 2.29m)

SPLIT LEVEL FIRST FLOOR

Landing

Bedroom 1: 13'9 x 11'1 (4.19m x 3.38m)

Bedroom 2: 11'4 x 10'7 (3.46m x 3.23m)

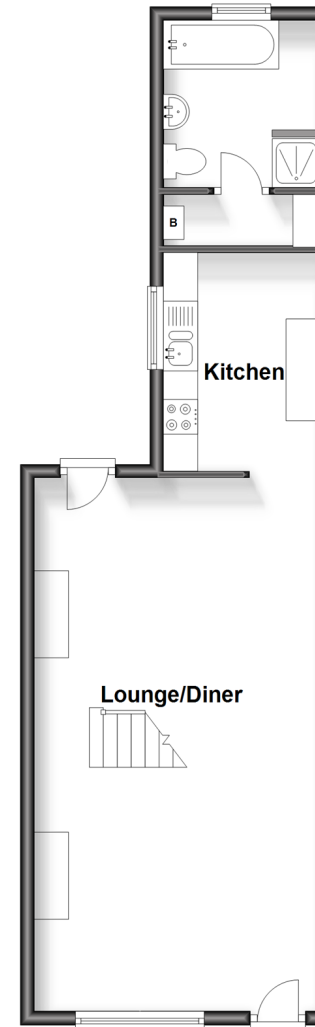
Bedroom 3: 10'5 x 7'6 (3.18m x 2.29m)

OUTSIDE

Rear Garden

Workshop

Ground Floor
Approx. 46.9 sq. metres (504.8 sq. feet)



Split Level First Floor
Approx. 39.3 sq. metres (422.8 sq. feet)



Call Sheerness - 01795 664651 ■ wardsofkent.co.uk

- Legal advice should be taken to verify fixtures/fittings, planning, alterations and/or lease details
- Appliances & services are untested, dimensions are approximate and floor plans are not to scale
- Through a Homewise Home For Life Plan people aged 60+ can secure this property for up to 59% less, by purchasing a Lifetime Lease.



11634946/20230603/DS/PA