



**Price**

**£320,000**

**Freehold**

4x  1x  1x 

**Foxley Road,  
Queenborough, Kent,  
ME11**

**OVER 60?**

Secure this property  
for up to **59% less!**

*Wards*  
Helping you move forwards





## Main features

- Arguably one of the best roads in Queenborough
- Kitchen includes a built in oven, hob & dishwasher
- Walk to the local Co-op & the railway station
- Perfect for a growing family to upgrade
- Take a stroll down to the Harbour

## Accommodation

### GROUND FLOOR

Entrance Porch: 8'3 x 4'7 (2.52m x 1.40m)  
 Entrance Hallway  
 Downstairs Cloakroom: 4'7 x 2'3 (1.40m x 0.69m)  
 Lounge: 12'4 (3.76m) x 11'6 (3.51m) narrowing to 11'2 (3.41m)  
 Dining Area: 11'5 x 11'2 (3.48m x 3.41m)  
 Kitchen/Breakfast Room: 10'0 x 9'7 (3.05m x 2.92m)  
 Conservatory: 10'2 x 9'2 (3.10m x 2.80m)

### FIRST FLOOR

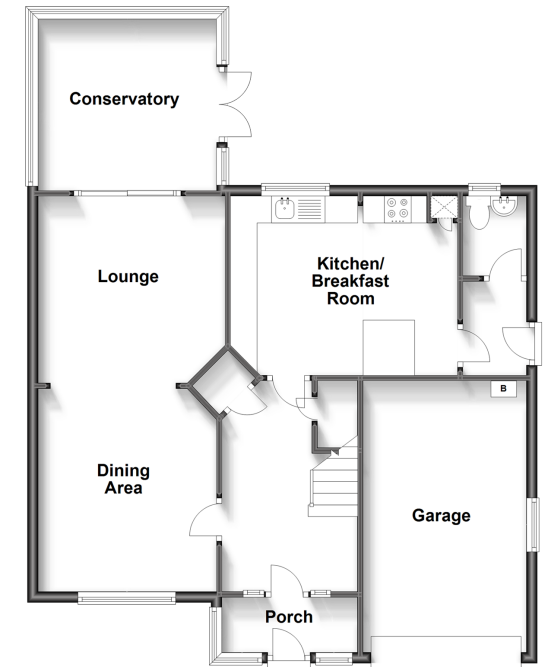
Landing  
 Bedroom 1: 20'0 (6.10m) x 10'7 (3.23m) narrowing to 7'7 (2.31m)  
 Bedroom 2: 15'6 (4.73m) narrowing to 11'2 (3.41m) x 11'8 (3.56m)  
 Bedroom 3: 11'3 x 9'9 (3.43m x 2.97m)  
 Bedroom 4: 8'3 x 7'5 (2.52m x 2.26m)  
 Shower Room: 8'2 x 4'6 (2.49m x 1.37m)

### OUTSIDE

Front Garden  
 Side Garden  
 Rear Garden  
 Driveway  
 Garage: 10'4 x 10'2 (3.15m x 3.10m)

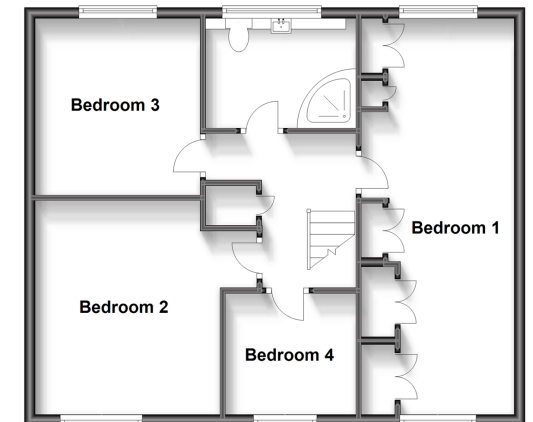
### Ground Floor

Approx. 84.4 sq. metres (908.2 sq. feet)



### First Floor

Approx. 65.8 sq. metres (708.1 sq. feet)



**Call Sheerness - 01795 664651 ■ [wardsofkent.co.uk](http://wardsofkent.co.uk)**

- Legal advice should be taken to verify fixtures/fittings, planning, alterations and/or lease details
- Appliances & services are untested, dimensions are approximate and floor plans are not to scale
- Through a Homewise Home For Life Plan people aged 60+ can secure this property for up to 59% less, by purchasing a Lifetime Lease.



11634965/20231208/DS/PA