

OVER 60?

Secure this property
for up to **59% less!**



Price

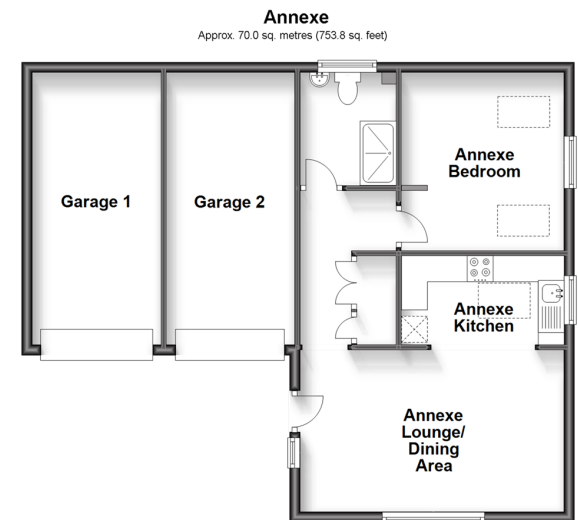
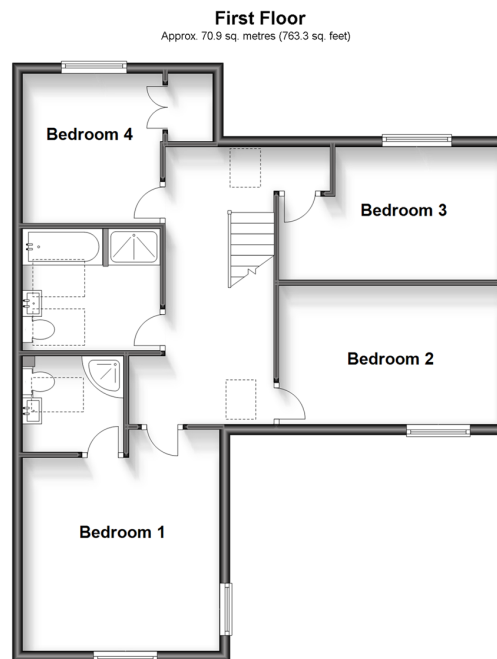
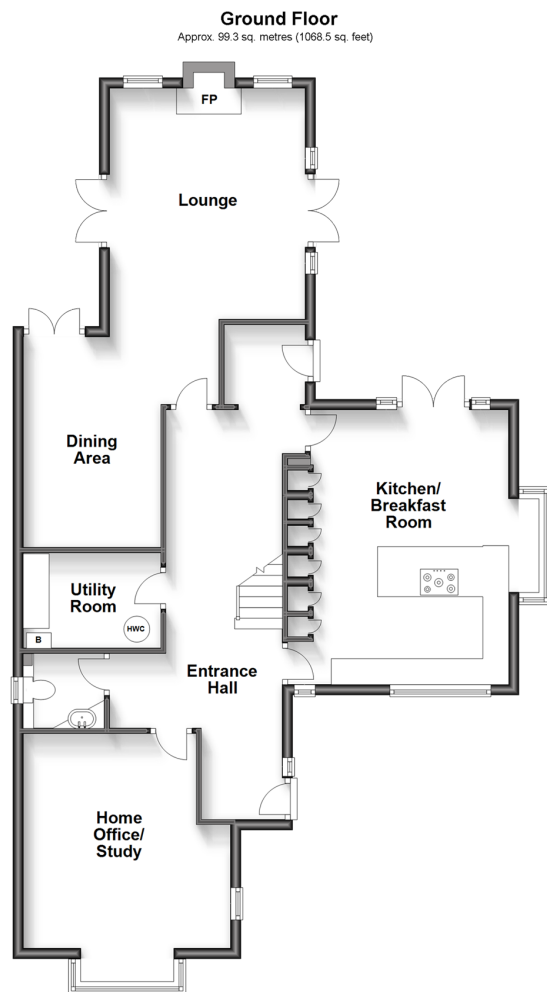
£675,000

Freehold

4x  1x  2x 

Kent View Drive, Eastchurch, Kent, ME12

Wards
Helping you move forwards



Accommodation

GROUND FLOOR

Entrance Hall
Downstairs Cloakroom: 5'2 x 4'7 (1.58m x 1.40m)
Lounge: 16'3 x 13'2 (4.96m x 4.02m)
Dining Area: 12'5 x 12'0 (3.79m x 3.66m)
Kitchen/Breakfast Room: 17'6 x 12'0 (5.34m x 3.66m)
Utility Room: 8'7 x 4'8 (2.62m x 1.42m)
Home Office/Study: 13'6 x 12'5 (4.12m x 3.79m)

FIRST FLOOR

Landing
Bedroom 1: 13'8 x 12'4 (4.17m x 3.76m)
En-Suite Shower Room: 6'3 x 6'3 (1.91m x 1.91m)
Bedroom 2: 14'1 x 8'5 (4.30m x 2.57m)
Bedroom 3: 10'6 x 8'6 (3.20m x 2.59m)
Bedroom 4: 9'3 x 8'8 (2.82m x 2.64m)
Walk in Wardrobe: 4'5 x 3'7 (1.35m x 1.09m)
Bathroom: 8'7 x 7'6 (2.62m x 2.29m)

OUTSIDE

Front Garden
Rear Garden
Off Road Parking

ANNEXE

Lounge/Dining Area: 18'9 x 10'3 (5.72m x 3.13m)
Kitchen Area: 10'5 x 6'2 (3.18m x 1.88m)
Bedroom: 11'0 x 10'5 (3.36m x 3.18m)
Shower Room: 7'6 x 6'0 (2.29m x 1.83m)

OUTSIDE

Front Garden
Side Gardens
Double Garage: 17'11 x 17'5 (5.46m x 5.31m)



Main features

- The main house has a stunning kitchen with 2 ovens and a dishwasher
- Home office or study downstairs, an ideal work space
- En-suite shower room to the main bedroom
- Relax in the lounge and eat in the separate dining room
- A separate bungalow (annexe) next door with a double garage



Nearest Schools

Primary Schools: Eastchurch C of E Primary 0.9 miles, Eastchurch C of E Primary 2.7 miles

Secondary Schools: Oasis Academy 4.9 miles, Fulston Manor School 6.9 miles



Transport Information

Train Stations: Queenborough 6.1 miles, Swale 6.4 miles, Sittingbourne 6.5 miles



Address

Kent View Drive, Eastchurch, Kent, ME12



Directions

For directions to this property please contact us.



Call Sheerness Branch 01795 664651 ■ wardsofkent.co.uk



- Legal advice should be taken to verify fixtures/fittings, planning, alterations and/or lease details
- Appliances & services are untested, dimensions are approximate and floor plans are not to scale
- Through a Homewise Home For Life Plan people aged 60+ can secure this property for up to 59% less, by purchasing a Lifetime Lease.



11634989/20230725/DS/PA