



OVER 60?

Secure this property
for up to **59% less!**

Price
£350,000

Freehold

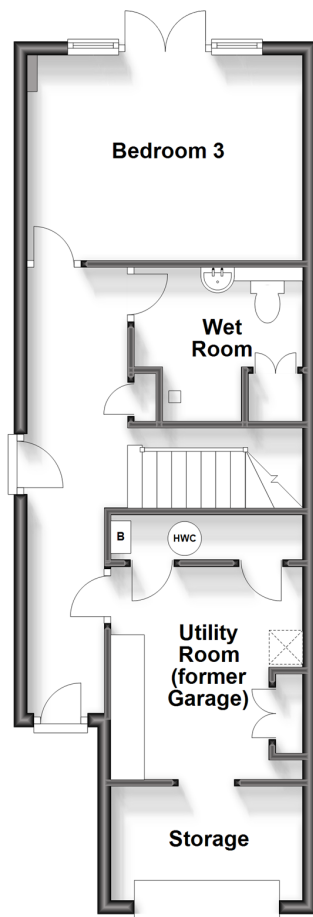
3x  3x  1x 

**Seaview Mews, Grove
Avenue,
Leysdown-On-Sea, Kent,
ME12**

Wards
Helping you move forwards

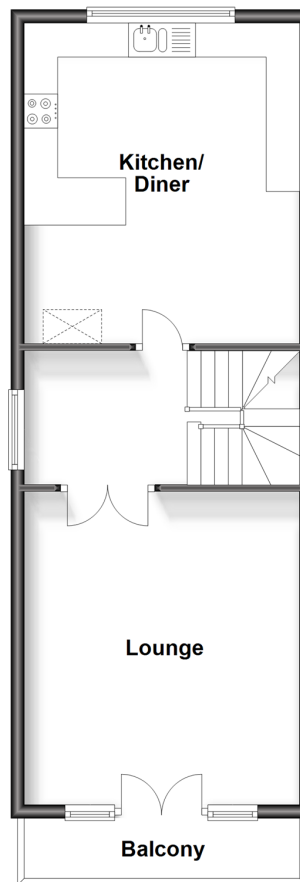
Ground Floor

Approx. 47.6 sq. metres (512.5 sq. feet)



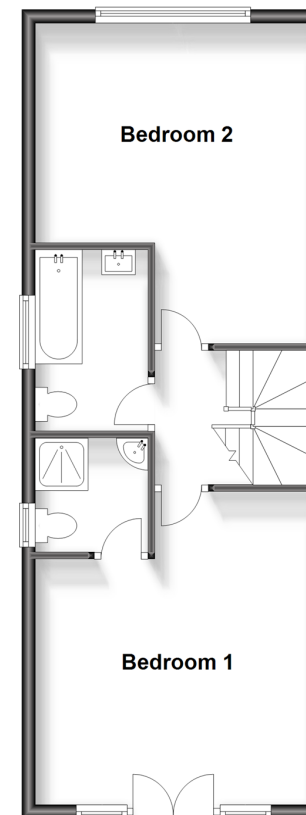
First Floor

Approx. 47.2 sq. metres (507.9 sq. feet)



Second Floor

Approx. 47.2 sq. metres (507.9 sq. feet)



Accommodation

GROUND FLOOR

Entrance Hall

Bedroom 3: 13'1 x 10'1 (3.99m x 3.08m)

Wet Room: 8'1 x 7'1 (2.47m x 2.16m)

Utility Room: 10'1 x 9'1 (3.08m x 2.77m)

FIRST FLOOR

Landing

Lounge: 15'1 x 13'1 (4.60m x 3.99m)

Kitchen/Diner: 13'1 x 13'1 (3.99m x 3.99m)

SECOND FLOOR

Landing

Bedroom 1: 15'0 x 14'0 (4.58m x 4.27m)

En-Suite Shower Room: 5'0 x 5'0 (1.53m x 1.53m)

Bedroom 2: 15'1 x 13'1 (4.60m x 3.99m)

Bathroom: 8'1 x 5'0 (2.47m x 1.53m)

OUTSIDE

Front Garden

Front Driveway

Rear Garden

Garage



Main features

- Stunning sea views from the main bedroom and lounge
- Under floor heating throughout the whole house
- Solar panels to stay
- Modern throughout with stunning blinds to the main bedroom
- Situated directly opposite the sea
- Unlimited access to the holiday park with club house swimming pool



Nearest Schools

Primary Schools: Eastchurch C of E Primary 0.7 miles, Eastchurch C of E Primary 2.7 miles

Secondary Schools: Oasis Academy 6.0 miles



Transport Information

Train Stations: Queenborough 7.4 miles, Swale 7.5 miles, Sheerness-on-Sea 7.6 miles



Address

Seaview Mews, Grove Avenue, Leysdown-On-Sea, Kent, ME12



Directions

For directions to this property please contact us.



Call Sheerness Branch 01795 664651 ■ wardsofkent.co.uk



- Legal advice should be taken to verify fixtures/fittings, planning, alterations and/or lease details
- Appliances & services are untested, dimensions are approximate and floor plans are not to scale
- Through a Homewise Home For Life Plan people aged 60+ can secure this property for up to 59% less, by purchasing a Lifetime Lease.



11635036/20230808/DS/JLS