



OVER 60?

Secure this property
for up to **59% less!**

Price

£400,000

Freehold

3x  1x  2x 

**Queenborough Road,
Halfway, Kent, ME12**

Wards
Helping you move forwards



Main features

- Fabulous spa bath plus step in shower cubicle
- Stunning kitchen with built in wine fridge, plus concealed washing machine & dryer
- Lovely field views to the front
- Useful downstairs cloakroom
- Parking plus a garage round the back

Accommodation

GROUND FLOOR

Entrance Hall
 Downstairs Cloakroom: 5'2 x 3'4 (1.58m x 1.02m)
 Lounge: 18'6 x 11'1 (5.64m x 3.38m)
 Dining Area: 10'9 x 9'0 (3.28m x 2.75m)
 Kitchen: 9'4 x 8'9 (2.85m x 2.67m)
 Conservatory: 11'7 x 11'2 (3.53m x 3.41m)

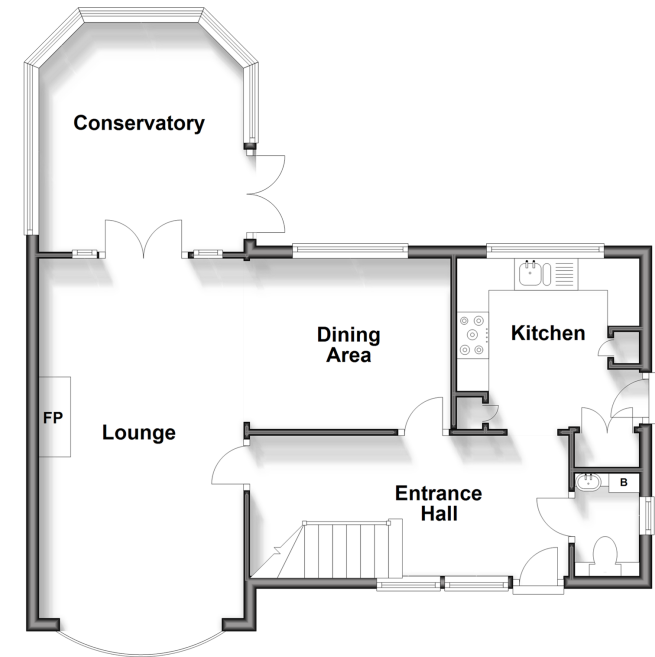
FIRST FLOOR

Landing
 Bedroom 1: 16'5 x 11'0 (5.01m x 3.36m)
 Bedroom 2: 11'11 x 9'0 (3.63m x 2.75m)
 Bedroom 3: 11'1 x 9'4 (3.38m x 2.85m)
 Bathroom: 8'9 x 7'6 (2.67m x 2.29m)

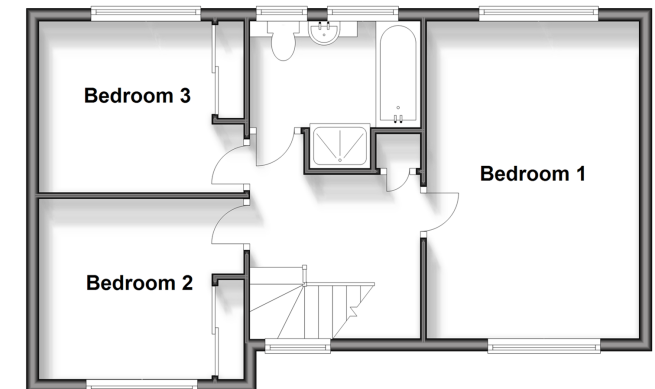
OUTSIDE

Front Garden
 Garage: 17'0 x 8'0 (5.19m x 2.44m)
 Drive in front of the garage
 Rear Garden
 Garden Shed: 8'0 x 4'0 (2.44m x 1.22m)

Ground Floor
 Approx. 60.8 sq. metres (654.1 sq. feet)



First Floor
 Approx. 48.9 sq. metres (526.8 sq. feet)



Call Sheerness - 01795 664651 ■ wardsofkent.co.uk

- Legal advice should be taken to verify fixtures/fittings, planning, alterations and/or lease details
- Appliances & services are untested, dimensions are approximate and floor plans are not to scale
- Through a Homewise Home For Life Plan people aged 60+ can secure this property for up to 59% less, by purchasing a Lifetime Lease.



11635135/20231124/PA/PA