

OVER 60?

Secure this property
for up to **59% less!**



Price

£425,000

Freehold

4x  2x  2x 

Squires Court, Eastchurch, Kent, ME12

Wards
Helping you move forwards



Main features

- Downstairs cloakroom, en-suite shower room & a family bathroom
- Kitchen plus a separate utility room
- Lovely size lounge plus a dining room
- Garage is currently used as a playroom & an office but could be changed back
- Plenty of parking to the front

Accommodation

GROUND FLOOR

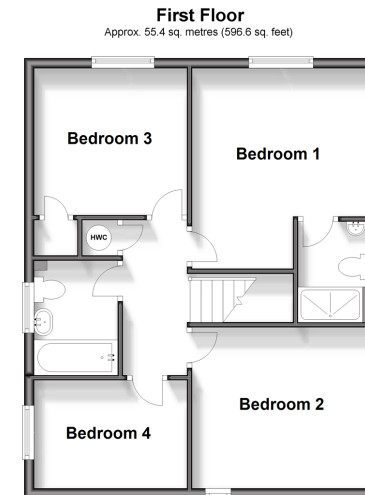
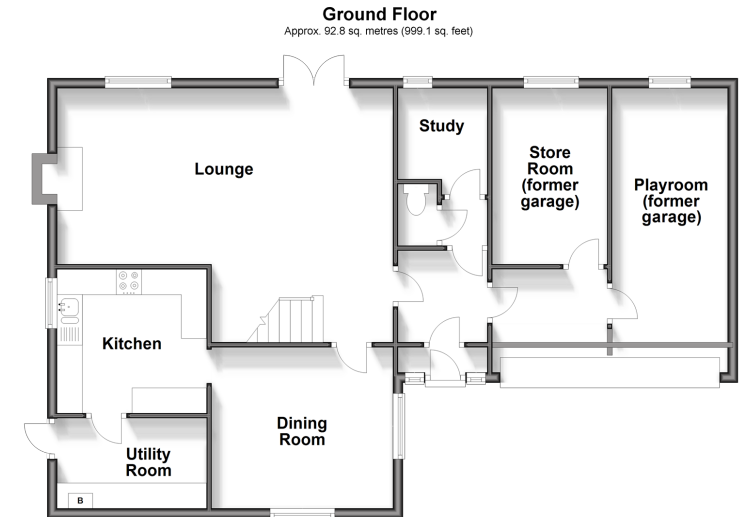
Entrance Porch
 Entrance Hall: 7'10 x 4'5 (2.39m x 1.35m)
 Downstairs Toilet: 3'9 x 2'7 (1.14m x 0.79m)
 Lounge: 22'4 (6.81m) x 17'3 (5.26m) narrowing to 12'6 (3.81m)
 Dining Room: 12'4 x 10'5 (3.76m x 3.18m)
 Kitchen: 10'2 x 9'5 (3.10m x 2.87m)
 Utility Room: 9'8 x 6'4 (2.95m x 1.93m)
 Playroom (former garage): 15'6 x 7'5 (4.73m x 2.26m)
 Study (former garage): 10'9 x 7'1 (3.28m x 2.16m)
 Store (former garage): 7'9 x 5'9 (2.36m x 1.75m)

FIRST FLOOR

Landing
 Bedroom 1: 14'2 x 13'3 (4.32m x 4.04m)
 En-suite Shower Room: 6'4 x 4'8 (1.93m x 1.42m)
 Bedroom 2: 9'9 x 9'1 (2.97m x 2.77m)
 Bedroom 3: 9'8 x 7'3 (2.95m x 2.21m)
 Bedroom 4: 12'4 x 10'6 (3.76m x 3.20m)
 Bathroom: 7'5 x 5'5 (2.26m x 1.65m)

OUTSIDE

Front Garden
 Front Driveway
 Rear Garden



Call Sheerness - 01795 664651 ■ wardsofkennt.co.uk

- Legal advice should be taken to verify fixtures/fittings, planning, alterations and/or lease details
- Appliances & services are untested, dimensions are approximate and floor plans are not to scale
- Through a Homewise Home For Life Plan people aged 60+ can secure this property for up to 59% less, by purchasing a Lifetime Lease.



11635161/20240113/CK/PA