



**Price**  
**£330,000**

**Freehold**

3x  1x  1x 

**Halfway Road, Halfway,  
Kent, ME12**

**OVER 60?**

Secure this property  
for up to **59% less!**

*Wards*  
Helping you move forwards





## Main features

- Driveway for multiple cars at the front
- Lovely sized lounge/dining area
- Kitchen/breakfast area which is great for those budding chefs
- Large garden split into two areas, perfect for a keen gardener
- A short stroll to the local shops & bus stop

## Accommodation

### SPLIT LEVEL GROUND FLOOR

Entrance Hall  
Lounge/Dining Area: 23'2 x 14'2 (7.07m x 4.32m)  
Kitchen/Breakfast Area: 21'6 x 13'4 (6.56m x 4.07m)

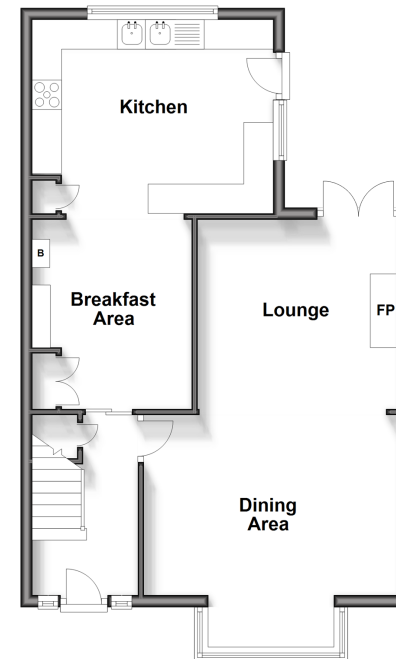
### FIRST FLOOR

Landing  
Bedroom 1: 10'10 x 10'0 (3.30m x 3.05m)  
Bedroom 2: 10'9 x 9'11 (3.28m x 3.02m)  
Bedroom 3: 7'6 x 6'7 (2.29m x 2.01m)  
Bathroom: 10'10 x 7'7 (3.30m x 2.31m)

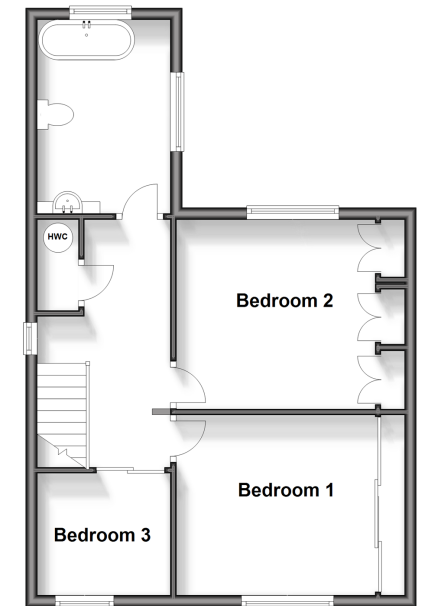
### OUTSIDE

Front Garden  
Front Driveway  
Rear Garden

**Split Level Ground Floor**  
Approx. 54.8 sq. metres (589.6 sq. feet)



**First Floor**  
Approx. 47.6 sq. metres (512.4 sq. feet)



**Call Sheerness - 01795 664651 ■ [wardsofkent.co.uk](http://wardsofkent.co.uk)**

- If buying to let, the energy rating will need to be improved to at least 'E' rating before you can let the property
- Appliances & services are untested, dimensions are approximate and floor plans are not to scale

- Legal advice should be taken to verify fixtures/fittings, planning, alterations and/or lease details
- Through a Homewise Home For Life Plan people aged 60+ can secure this property for up to 59% less, by purchasing a Lifetime Lease.



11635169/20240226/JLS/JLS