

OVER 60?

Secure this property
for up to **59% less!**



Price

£309,000

Freehold

2x  1x  1x 

Halfway Road, Halfway, Kent, ME12

Wards
Helping you move forwards



Main features

- **Absolutely stunning countryside views to the rear**
- **Ample parking for your cars**
- **Desirable location to Halfway & Sheerness High Street**
- **Brand new kitchen to include fridge/freezer, washer/dryer & induction hob**
- **Brand new shower room with 6 way shower & defrost mirror**
- **Your choice of carpets to be laid in the property**

Accommodation

GROUND FLOOR

Entrance Hall

Lounge/Diner: 21'1 (6.43m) x 11'1 (3.38m) narrowing to 6'1 (1.86m)

Kitchen: 9'1 x 8'1 (2.77m x 2.47m)

Bedroom 1: 12'0 x 11'1 (3.66m x 3.38m)

Bedroom 2: 12'1 x 10'0 (3.69m x 3.05m)

Shower Room: 7'1 x 6'1 (2.16m x 1.86m)

OUTSIDE

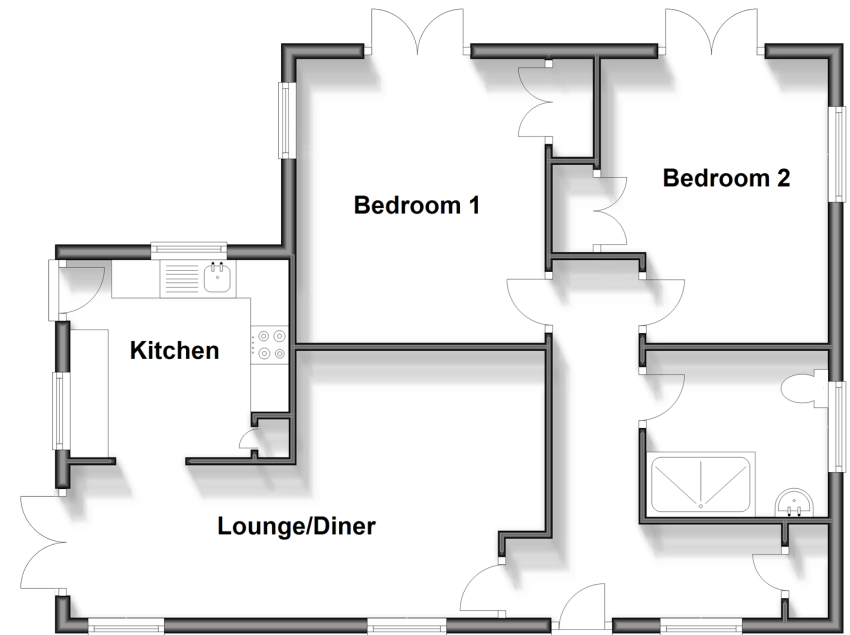
Off Road Parking

Front Garden

Rear Garden

Ground Floor

Approx. 64.5 sq. metres (694.6 sq. feet)



Call Sheerness - 01795 664651 ■ wardsofkent.co.uk

■ Legal advice should be taken to verify fixtures/fittings, planning, alterations and/or lease details
 ■ Through a Homewise Home For Life Plan people aged 60+ can secure this property for up to 59% less, by purchasing a Lifetime Lease.

■ Appliances & services are untested, dimensions are approximate and floor plans are not to scale



11635170/20240425/JLS/JLS