



OVER 60?

Secure this property
for up to **59% less!**

Price
£325,000

Freehold

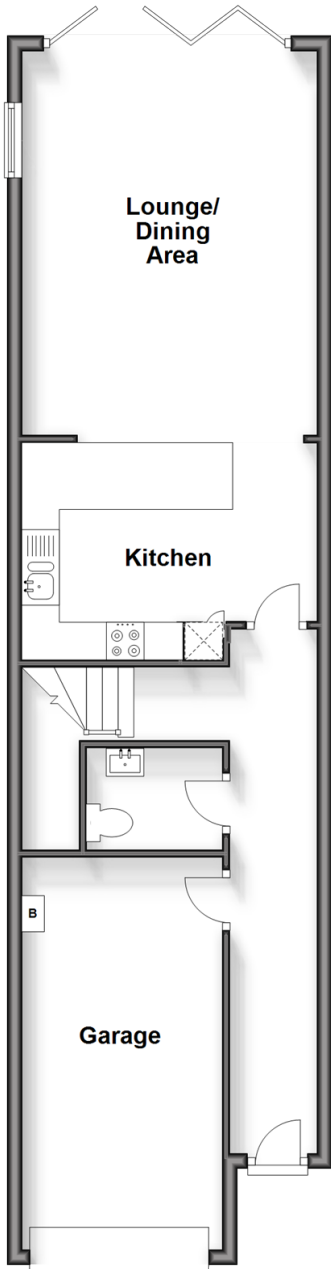
4x  2x  1x 

**Mount Field,
Queenborough, Kent,
ME11**

Wards
Helping you move forwards

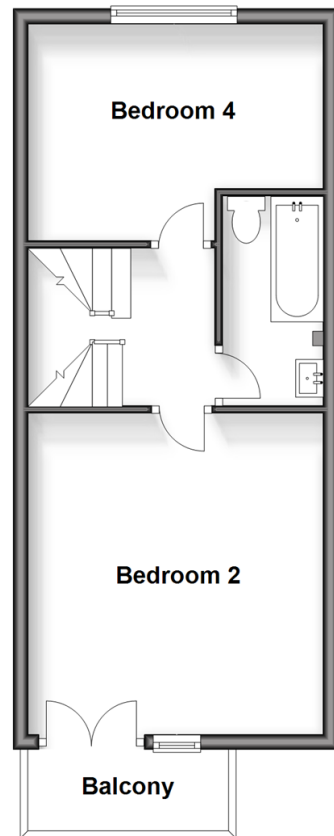
Ground Floor

Approx. 61.0 sq. metres (656.9 sq. feet)



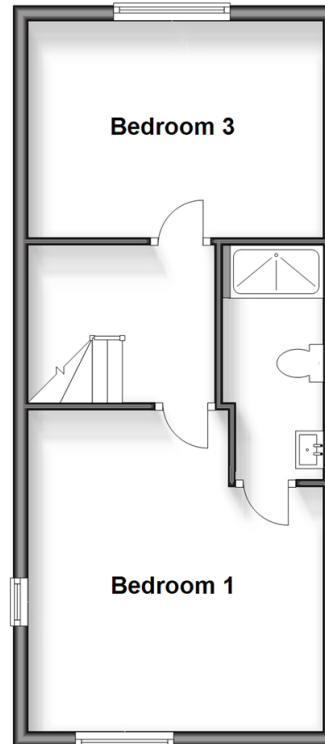
First Floor

Approx. 37.2 sq. metres (400.0 sq. feet)



Second Floor

Approx. 37.2 sq. metres (400.0 sq. feet)



Accommodation

GROUND FLOOR

Entrance Hall

Downstairs Cloakroom: 5'6 x 4'3 (1.68m x 1.30m)

Lounge/Dining/Kitchen Area: 28'1 (8.57m) x 13'0 (3.97m) narrowing to 12'5 (3.79m)

FIRST FLOOR

Landing

Bedroom 2: 13'10 x 13'1 (4.22m x 3.99m)

Bedroom 4: 13'1 x 9'5 (3.99m x 2.87m)

Bathroom: 9'1 x 4'4 (2.77m x 1.32m)

SECOND FLOOR

Landing

Bedroom 1: 13'10 x 13'0 (4.22m x 3.97m)

En-Suite Shower Room: 9'11 x 3'7 (3.02m x 1.09m)

Bedroom 3: 13'1 x 9'5 (3.99m x 2.87m)

OUTSIDE

Driveway

Integral Garage: 16'7 x 8'3 (5.06m x 2.52m)

Front Garden

Rear Garden



Main features

- Beautifully decorated inside and out
- Bi-fold doors leading out onto the rear garden
- Personal door from the hallway into the garage
- Useful downstairs cloakroom, ideal for guests
- Bathroom plus en-suite shower room to the main bedroom
- Take a stroll down to the Harbour at Queenborough



Nearest Schools

Primary Schools: Halfway Houses Primary 1.4 miles, Minster in Sheppey Primary 2.4 miles, Richmond Primary 2.8 miles

Secondary Schools: Oasis Academy 2.0 miles



Transport Information

Train Stations: Queenborough 0.5 miles, Swale 3.1 miles, Sheerness-on-Sea 3.2 miles



Address

Mount Field, Queenborough, Kent, ME11



Directions

For directions to this property please contact us.



Wards
Helping you move forwards

Call Sheerness Branch 01795 664651 ■ wardsofkent.co.uk



■ Legal advice should be taken to verify fixtures/fittings, planning, alterations and/or lease details ■ Appliances & services are untested, dimensions are approximate and floor plans are not to scale
■ Through a Homewise Home For Life Plan people aged 60+ can secure this property for up to 59% less, by purchasing a Lifetime Lease.



11635180/20240203/DS/PA