

OVER 60?

Secure this property
for up to **59% less!**



Price

£390,000

Freehold

3x  1x  1x 

Kings Road, Minster On Sea, Kent, ME12

Wards
Helping you move forwards



Main features

- A great size lounge/diner, perfect for entertaining
- Handy study just off the dining area, perfect for working from home
- Great location only a short stroll from the beach
- Newly fitted kitchen with integrated appliances included

Accommodation

GROUND FLOOR

Entrance Porch

Cloakroom: 4'0 x 2'8 (1.22m x 0.81m)

Entrance Hallway

Lounge/Dining Area: 21'1 (6.43m) narrowing to 11'11 (3.63m) x 18'1 (5.52m)

Study: 9'0 x 8'1 (2.75m x 2.47m)

Kitchen: 10'0 x 9'0 (3.05m x 2.75m)

Internal Hallway

Bedroom 1: 13'0 x 11'0 (3.97m x 3.36m)

Bedroom 2: 12'0 x 10'0 (3.66m x 3.05m)

Bedroom 3: 12'0 x 8'0 (3.66m x 2.44m)

Shower Room: 8'0 x 7'0 (2.44m x 2.14m)

OUTSIDE

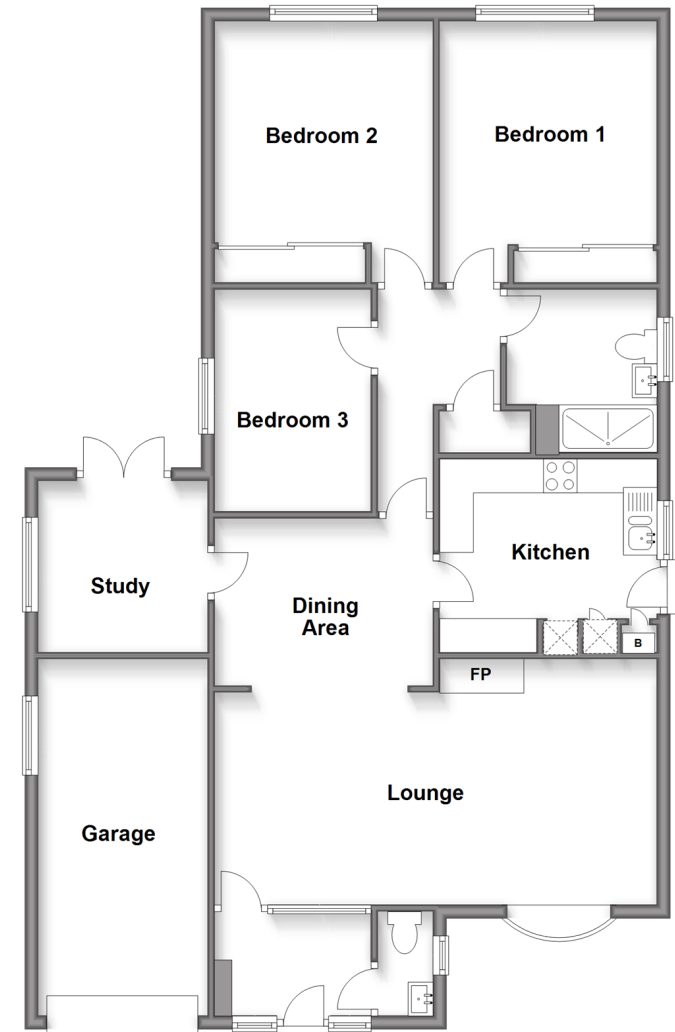
Front Garden

Off Road Parking

Rear Garden

Garage

Ground Floor
Approx. 111.6 sq. metres (1200.7 sq. feet)



Call Sheerness - 01795 664651 ■ wardsofkent.co.uk

- Legal advice should be taken to verify fixtures/fittings, planning, alterations and/or lease details
- Appliances & services are untested, dimensions are approximate and floor plans are not to scale
- Through a Homewise Home For Life Plan people aged 60+ can secure this property for up to 59% less, by purchasing a Lifetime Lease.



11635203/20240302/DS/JLS