



OVER 60?

Secure this property
for up to **59% less!**

Price
£190,000

Freehold

2x  1x  1x 

**Milstead Close,
Sheerness, Kent, ME12**

Wards
Helping you move forwards



Main features

- Plenty of space in the lounge for a sofa and table and chairs
- Built in wardrobes in both bedrooms
- Sit and relax in the double glazed conservatory
- Fabulous far reaching views from the rear garden
- Separate bathroom upstairs
- No chain

Accommodation

GROUND FLOOR

Entrance Hall

Lounge: 16'7 (5.06m) x 12'0 (3.66m)
narrowing to 10'2 (3.10m)

Kitchen: 10'8 x 8'0 (3.25m x 2.44m)

Conservatory: 9'8 x 6'3 (2.95m x 1.91m)

FIRST FLOOR

Landing

Bedroom 1: 15'5 x 9'9 (4.70m x 2.97m)

Bedroom 2: 11'9 x 8'6 (3.58m x 2.59m)

Bathroom: 6'3 x 5'4 (1.91m x 1.63m)

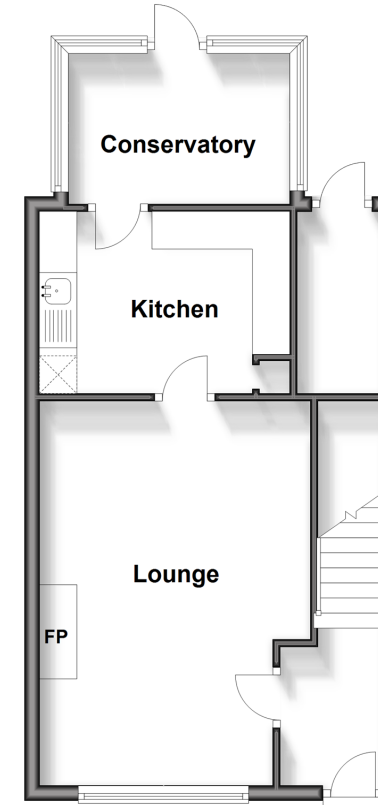
OUTSIDE

Front Garden

Rear Garden

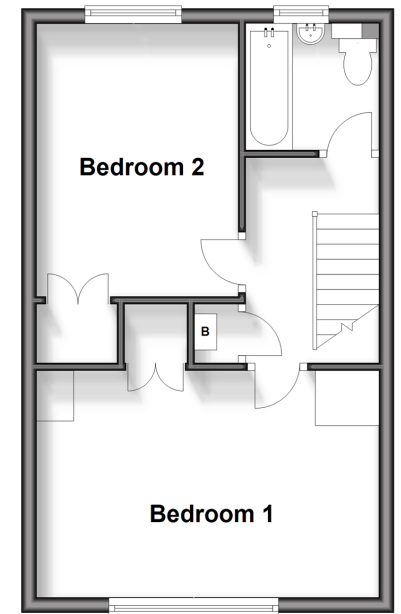
Ground Floor

Approx. 41.1 sq. metres (442.9 sq. feet)



First Floor

Approx. 35.0 sq. metres (376.3 sq. feet)



Call Sheerness - 01795 664651 ■ wardsofkent.co.uk

- Legal advice should be taken to verify fixtures/fittings, planning, alterations and/or lease details
- Appliances & services are untested, dimensions are approximate and floor plans are not to scale
- Through a Homewise Home For Life Plan people aged 60+ can secure this property for up to 59% less, by purchasing a Lifetime Lease.



11635207/20240504/DS/PA