



**Price**  
**£251,250**

**Leasehold**

3x  2x  1x 

**Belgrave Place,  
Belgrave Avenue,  
Minster-On-Sea, Kent,  
ME12**

*Wards*  
Helping you move forwards



## Main features

- **Brand new semi-detached home**
- **837 sq. ft. of living space**
- **En-Suite to the main bedroom plus a family bathroom**
- **Newly fitted kitchen with built in appliances**
- **French doors in living area to the rear garden**
- **75% shared ownership**

## Accommodation

### GROUND FLOOR

Entrance Hall  
Downstairs Cloakroom  
Living Area: 15'7 x 10'4 (4.75m x 3.15m)  
Kitchen/Dining Area: 16'8 x 8'9 (5.08m x 2.67m)

### FIRST FLOOR

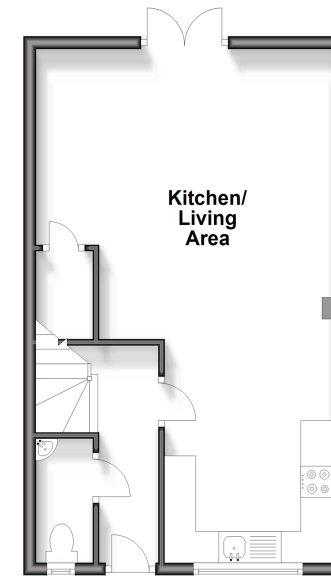
Landing  
Bedroom 1: 10'10 x 8'7 (3.30m x 2.62m)  
En-Suite Shower Room: 8'7 x 5'5 (2.62m x 1.65m)  
Bedroom 2: 10'2 x 8'7 (3.10m x 2.62m)  
Bedroom 3: 10'5 x 6'9 (3.18m x 2.06m)  
Bathroom: 6'9 x 6'5 (2.06m x 1.96m)

### OUTSIDE

Front Garden  
Front Driveway  
Rear Garden

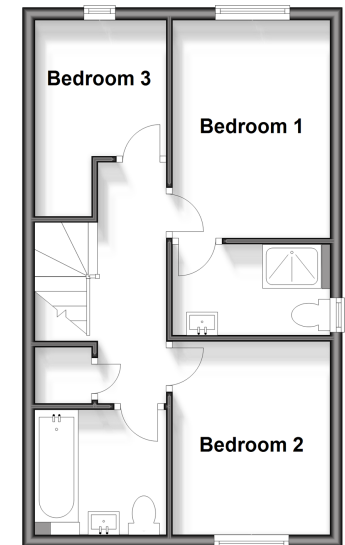
### Ground Floor

Approx. 38.9 sq. metres (419.1 sq. feet)



### First Floor

Approx. 38.9 sq. metres (419.1 sq. feet)



**Call Sheerness - 01795 664651 ■ [wardsofkent.co.uk](http://wardsofkent.co.uk)**

■ If buying to let, the energy rating will need to be improved to at least 'E' rating before you can let the property

■ Appliances & services are untested, dimensions are approximate and floor plans are not to scale

■ Legal advice should be taken to verify fixtures/fittings, planning, alterations and/or lease details



11635215/20240209/DS/JLS