

**OVER 60?**

Secure this property  
for up to **59% less!**



**Price**  
**£325,000**  
**Freehold**

2x  2x  1x 

Glenwood Drive, Minster On Sea, Kent,  
ME12

*Wards*  
Helping you move forwards



## Main features

- **Garage plus off road parking**
- **Just down the road from The Glen Village Green**
- **Short stroll from the local school and shops at The Broadway**
- **Great sized loft room, perfect for a games/hobby room**
- **Sit and relax in the conservatory and look out onto the garden**

## Accommodation

### GROUND FLOOR

Entrance Hall

Lounge: 14'0 x 13'0 (4.27m x 3.97m)

Kitchen: 17'7 x 8'0 (5.36m x 2.44m)

Conservatory: 11'0 x 9'0 (3.36m x 2.75m)

Bedroom 1: 11'0 x 10'0 (3.36m x 3.05m)

En-Suite Shower Room: 8'0 x 6'0 (2.44m x 1.83m)

Bedroom 2: 12'0 x 10'1 (3.66m x 3.08m)

Bathroom: 10'0 x 7'1 (3.05m x 2.16m)

### FIRST FLOOR

Loft Room: 17'1 x 11'10 (5.21m x 3.61m)

Loft Space: 15'6 x 9'1 (4.73m x 2.77m)

Eaves

### OUTBUILDING

Garage: 18'5 x 13'5 (5.62m x 4.09m)

Store Room: 6'11 x 6'4 (2.11m x 1.93m)

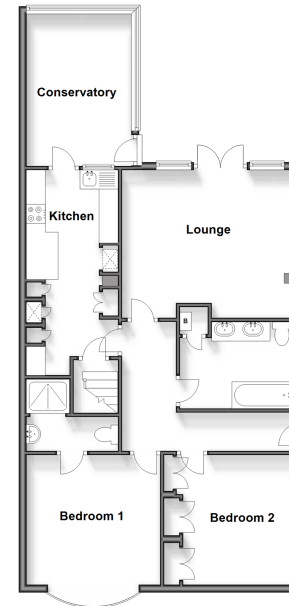
### OUTSIDE

Front Garden

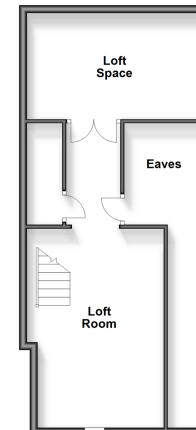
Rear Garden

Driveway

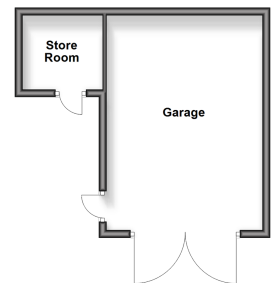
**Ground Floor**  
Approx. 88.3 sq. metres (950.3 sq. feet)



**First Floor**  
Approx. 50.4 sq. metres (542.7 sq. feet)



**Outbuilding**  
Approx. 0.0 sq. metres (0.0 sq. feet)



**Call Sheerness - 01795 664651 ■ [wardsofkent.co.uk](http://wardsofkent.co.uk)**

■ Legal advice should be taken to verify fixtures/fittings, planning, alterations and/or lease details  
■ Through a Homewise Home For Life Plan people aged 60+ can secure this property for up to 59% less, by purchasing a Lifetime Lease.

■ Appliances & services are untested, dimensions are approximate and floor plans are not to scale



11635251/20240521/JLS/JLS