



**Price**  
**£180,000**

**Leasehold**

2x  1x  1x 

**Mansfield Drive, Iwade,  
Kent, ME9**

**OVER 60?**

Secure this property  
for up to **59% less!**

*Wards*  
Helping you move forwards





## Main features

- Spacious first floor apartment
- Balcony to the front offering outside space
- Popular village of Iwade with great access to schools, shops and quiet relaxing walks
- There is allocated parking with the property
- No onward chain

## Accommodation

### FIRST FLOOR

Entrance Hall

Bathroom

Bedroom 1: 12'10 x 10'3 (3.91m x 3.13m)

Bedroom 2: 10'3 x 8'3 (3.13m x 2.52m)

Kitchen: 9'3 x 7'10 (2.82m x 2.39m)

Lounge/Diner: 15'5 x 12'9 (4.70m x 3.89m)

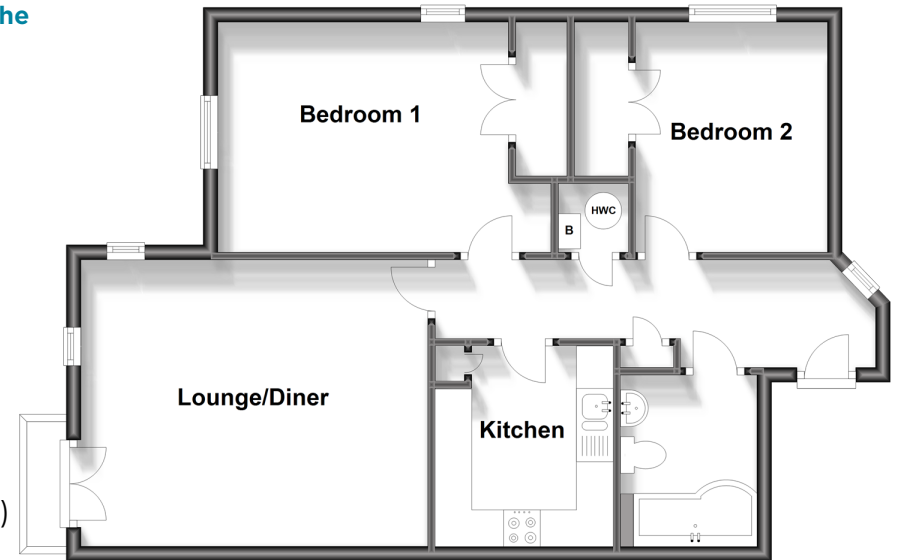
Balcony

### OUTSIDE

Allocated Parking

### First Floor

Approx. 65.1 sq. metres (700.7 sq. feet)



**Call Sittingbourne - 01795 427272 ■ [wardsofkent.co.uk](http://wardsofkent.co.uk)**

- Legal advice should be taken to verify fixtures/fittings, planning, alterations and/or lease details
- Appliances & services are untested, dimensions are approximate and floor plans are not to scale
- Through a Homewise Home For Life Plan people aged 60+ can secure this property for up to 59% less, by purchasing a Lifetime Lease.



11727311/20230804/JS/JS