



**OVER 60?**

Secure this property  
for up to **59% less!**

**Price**

**£500,000**

**Freehold**

4x  2x  2x 

**Cinnabar Drive,  
Sittingbourne, Kent,  
ME10**

*Wards*  
Helping you move forwards





## Main features

- **Spacious rooms throughout**
- **Popular position for families with schools, shops, bus routes, train station and road networks all close by**
- **Having a separate lounge and dining area with a centre island in the kitchen, makes this the perfect home to spend quality time with your family**
- **Beautifully presented detached house**
- **Garage and off road parking**

## Accommodation

### GROUND FLOOR

Entrance Hall  
Cloakroom  
Lounge: 17'2 x 11'11 (5.24m x 3.63m)  
Dining Area: 10'7 x 9'11 (3.23m x 3.02m)  
Kitchen: 14'5 x 11'8 (4.40m x 3.56m)  
Utility Area

### FIRST FLOOR

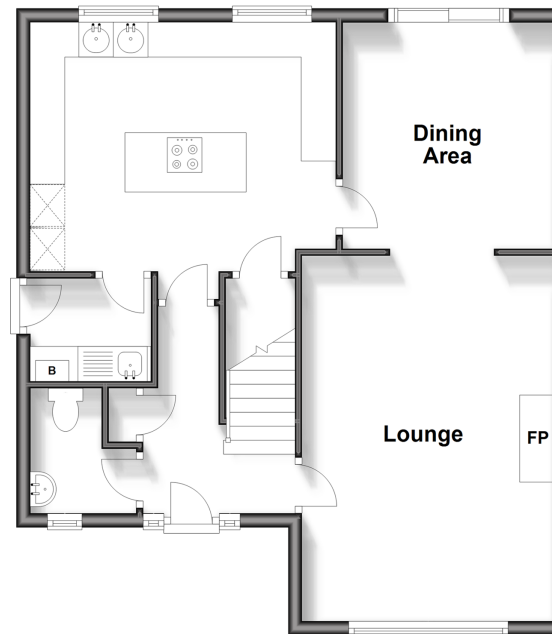
Landing  
Bedroom 1: 13'2 x 11'11 (4.02m x 3.63m)  
En-Suite Shower Room  
Bedroom 2: 12'2 x 9'0 (3.71m x 2.75m)  
Bedroom 3: 11'4 x 9'5 (3.46m x 2.87m)  
Bedroom 4: 8'9 x 7'10 (2.67m x 2.39m)  
Bathroom

### OUTSIDE

Front Garden  
Garage  
Off Road Parking  
Rear Garden

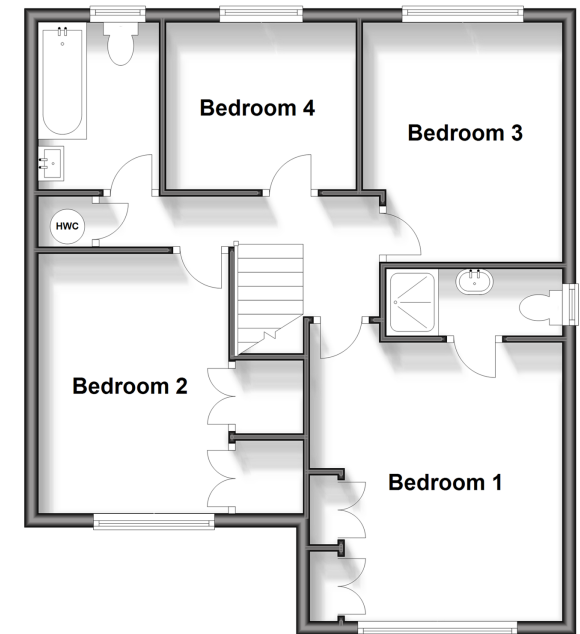
### Ground Floor

Approx. 59.0 sq. metres (634.9 sq. feet)



### First Floor

Approx. 58.8 sq. metres (633.2 sq. feet)



**Call Sittingbourne - 01795 427272 ■ [wardsofkent.co.uk](http://wardsofkent.co.uk)**

■ Legal advice should be taken to verify fixtures/fittings, planning, alterations and/or lease details  
■ Through a Homewise Home For Life Plan people aged 60+ can secure this property for up to 59% less, by purchasing a Lifetime Lease.

■ Appliances & services are untested, dimensions are approximate and floor plans are not to scale



11728522/20231108/KC/JS