



Price
£400,000

Freehold

4x  2x  1x 

**The Willows,
Sittingbourne, Kent,
ME10**

OVER 60?

Secure this property
for up to **59% less!**

Wards
Helping you move forwards



Main features

- Beautifully presented and spacious throughout
- Garage and off road parking to the side
- Stunning rear garden
- Heavily extended allowing more space to entertain family and friends
- Set in a quiet location nearby to local schools, shops and amenities

Accommodation

GROUND FLOOR

Cloakroom

Lounge: 15'8 x 11'9 (4.78m x 3.58m)

Dining Area: 12'6 x 9'6 (3.81m x 2.90m)

Kitchen/Breakfast Area: 18'2 x 9'0 (5.54m x 2.75m)

Utility Area: 15'2 x 8'5 (4.63m x 2.57m)

FIRST FLOOR

Landing

Bedroom 1: 13'1 x 8'8 (3.99m x 2.64m)

En-Suit Shower Room

Bedroom 2: 12'8 x 8'8 (3.86m x 2.64m)

Bedroom 3: 10'3 x 9'0 (3.13m x 2.75m)

Bedroom 4: 9'1 x 8'2 (2.77m x 2.49m)

Bathroom

OUTSIDE

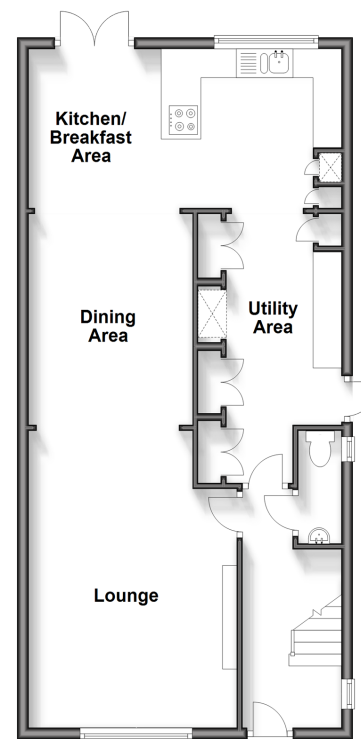
Front Garden

Garage

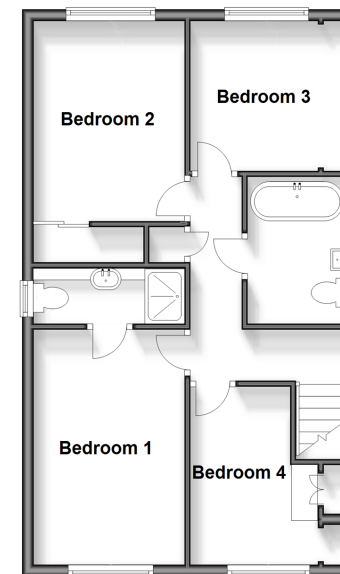
Off Road Parking

Rear Garden

Ground Floor
Approx. 65.0 sq. metres (699.7 sq. feet)



First Floor
Approx. 52.2 sq. metres (561.4 sq. feet)



Call Sittingbourne - 01795 427272 ■ wardsof Kent.co.uk

- If buying to let, the energy rating will need to be improved to at least 'E' rating before you can let the property
- Appliances & services are untested, dimensions are approximate and floor plans are not to scale

- Legal advice should be taken to verify fixtures/fittings, planning, alterations and/or lease details
- Through a Homewise Home For Life Plan people aged 60+ can secure this property for up to 59% less, by purchasing a Lifetime Lease.



11731443/20240326/KC/TB