



Price
£410,000

Freehold

4x  2x  1x 

**Meadow Brown View,
Iwade, Kent, ME9**

OVER 60?

Secure this property
for up to **59% less!**

Wards
Helping you move forwards



Main features

- **Garage and off road parking to the rear**
- **Stunning and versatile accommodation ready for a family**
- **Highly desirable village location of Iwade**
- **Popular local schools and motorway with links to the coast**
- **Positioned opposite a field offering a glorious view with a great degree of peace and quiet**

Accommodation

GROUND FLOOR

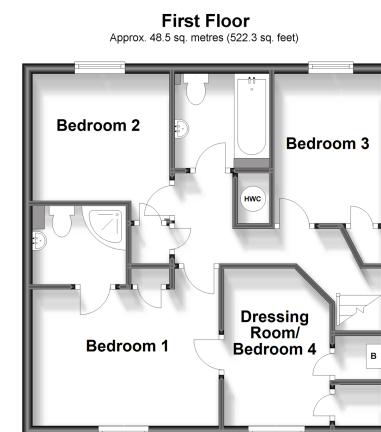
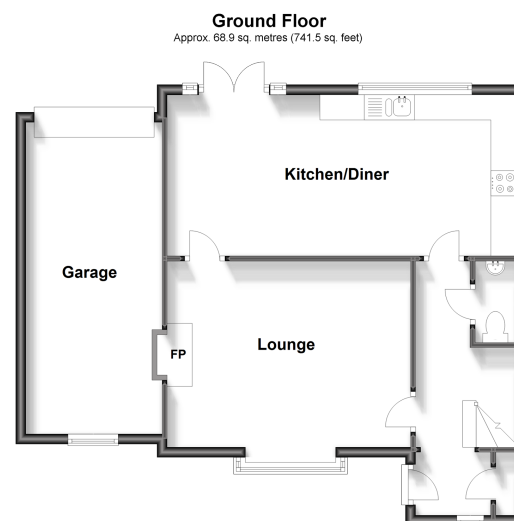
Entrance Hall
Cloakroom
Lounge: 16'0 x 12'0 (4.88m x 3.66m)
Kitchen/Diner: 23'0 x 10'0 (7.02m x 3.05m)

FIRST FLOOR

Landing
Bedroom 1 : 12'0 x 8'10 (3.66m x 2.69m)
En-Suite Shower Room
Bedroom 2 : 9'0 x 8'0 (2.75m x 2.44m)
Bedroom 3 : 9'0 x 7'0 (2.75m x 2.14m)
Dressing Room/Bedroom 4 : 10'0 x 6'10 (3.05m x 2.08m)
Bathroom: 6'0 x 6'0 (1.83m x 1.83m)

OUTSIDE

Front Garden
Garage
Off Road Parking
Rear Garden



Call Sittingbourne - 01795 427272 ■ wardsofkent.co.uk

■ Legal advice should be taken to verify fixtures/fittings, planning, alterations and/or lease details
■ Through a Homewise Home For Life Plan people aged 60+ can secure this property for up to 59% less, by purchasing a Lifetime Lease.

■ Appliances & services are untested, dimensions are approximate and floor plans are not to scale



11733634/20230909/KC/JS