



OVER 60?

Secure this property
for up to **59% less!**

Price

£280,000

Freehold

2x  1x  1x 

**Crossways,
Sittingbourne, Kent,
ME10**

Wards
Helping you move forwards



Main features

- Beautifully presented with neutral decor throughout
- 2 allocated parking spaces
- Sunny garden with room to entertain
- Set in a quiet cul-de-sac, perfect for a growing family
- A highly sought after location, close to schools, shops and amenities

Accommodation

GROUND FLOOR

Entrance Hall
Cloakroom
Lounge: 15'9 x 11'9 (4.80m x 3.58m)
Kitchen: 11'7 x 11'5 (3.53m x 3.48m)

FIRST FLOOR

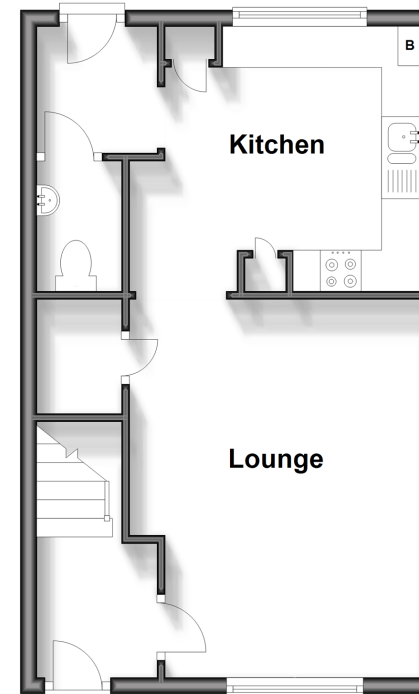
Landing
Bedroom 1: 15'6 x 11'1 (4.73m x 3.38m)
Bedroom 2: 15'7 x 8'4 (4.75m x 2.54m)
Bathroom

OUTSIDE

Front Garden
Rear Garden
2 Allocated Parking Space

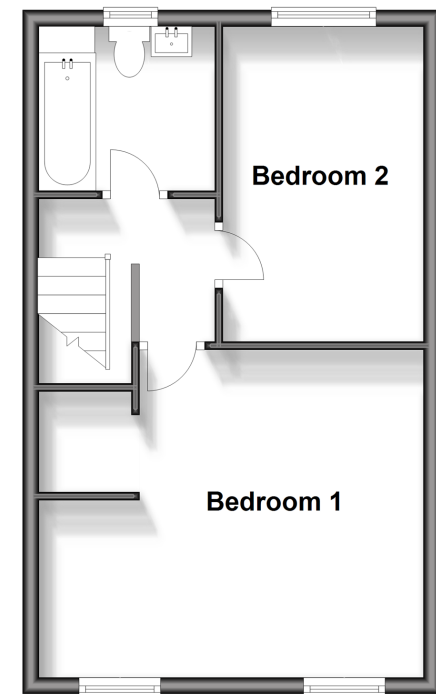
Ground Floor

Approx. 37.5 sq. metres (403.5 sq. feet)



First Floor

Approx. 37.5 sq. metres (403.5 sq. feet)



Call Sittingbourne - 01795 427272 ■ wardsof Kent.co.uk

- Legal advice should be taken to verify fixtures/fittings, planning, alterations and/or lease details
- Appliances & services are untested, dimensions are approximate and floor plans are not to scale
- Through a Homewise Home For Life Plan people aged 60+ can secure this property for up to 59% less, by purchasing a Lifetime Lease.



11736758/20240513/KW/TB