



**Price**  
**£350,000**

**Freehold**

4x  2x  1x 

**Leigh Road,  
Sittingbourne, Kent,  
ME10**

**OVER 60?**

Secure this property  
for up to **59% less!**



**Video Tour available**

**Wards**  
Helping you move forwards





## Main features

- A versatile family home
- Secluded position on the development with not much passing traffic
- Off road parking for 2 vehicles
- Immaculate condition throughout and ready to move into
- Popular newer build development

## Accommodation

### GROUND FLOOR

Entrance Hall

Cloakroom

Kitchen/Breakfast Room: 11'7 x 9'5 (3.53m x 2.87m)

Lounge/Diner: 17'4 x 16'7 (5.29m x 5.06m)

### FIRST FLOOR

Landing

Bedroom 1: 9'9 x 9'1 (2.97m x 2.77m)

En-Suite Shower Room

Bedroom 2: 9'11 x 8'2 (3.02m x 2.49m)

Bedroom 3: 8'10 x 6'6 (2.69m x 1.98m)

Bedroom 4: 10'9 x 6'8 (3.28m x 2.03m)

Bathroom

### OUTSIDE

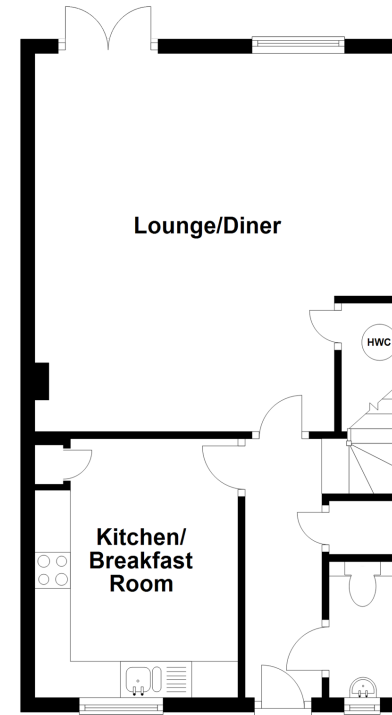
Front Garden

2 Allocated Parking Spaces

Rear Garden

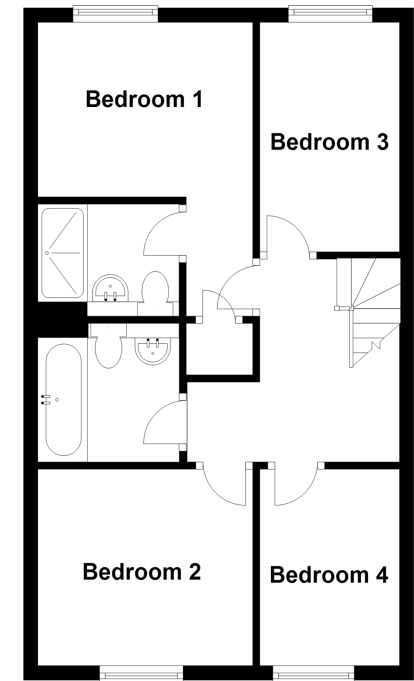
### Ground Floor

Approx. 45.3 sq. metres (487.8 sq. feet)



### First Floor

Approx. 45.3 sq. metres (487.8 sq. feet)



**Call Sittingbourne - 01795 427272 ■ [wardsofKent.co.uk](http://wardsofKent.co.uk)**

- Legal advice should be taken to verify fixtures/fittings, planning, alterations and/or lease details
- Appliances & services are untested, dimensions are approximate and floor plans are not to scale
- Through a Homewise Home For Life Plan people aged 60+ can secure this property for up to 59% less, by purchasing a Lifetime Lease.



11737129/20220917/KC/JS