



**Guide Price**  
**£300,000**

**Freehold**

4x  1x  1x 

**Regency Court,  
Sittingbourne, Kent,  
ME10**

**OVER 60?**

Secure this property  
for up to **59% less!**

*Wards*  
Helping you move forwards



## Main features

- Immaculate home ready to move straight into
- Extended downstairs, giving plenty of living space
- Close to town, great access to local shops
- Garage en-bloc which is useful for extra storage
- Versatile layout

## Accommodation

### GROUND FLOOR

Entrance Porch

Lounge: 15'11 x 11'2 (4.85m x 3.41m)

Kitchen: 15'0 x 11'3 (4.58m x 3.43m)

Dining Area: 15'4 x 8'2 (4.68m x 2.49m)

### FIRST FLOOR

Landing

Bedroom 1: 11'2 x 9'1 (3.41m x 2.77m)

Bedroom 2: 8'8 x 8'3 (2.64m x 2.52m)

Bedroom 3: 8'9 x 6'9 (2.67m x 2.06m)

Bedroom 4: 8'9 x 6'8 (2.67m x 2.03m)

Bathroom

### OUTSIDE

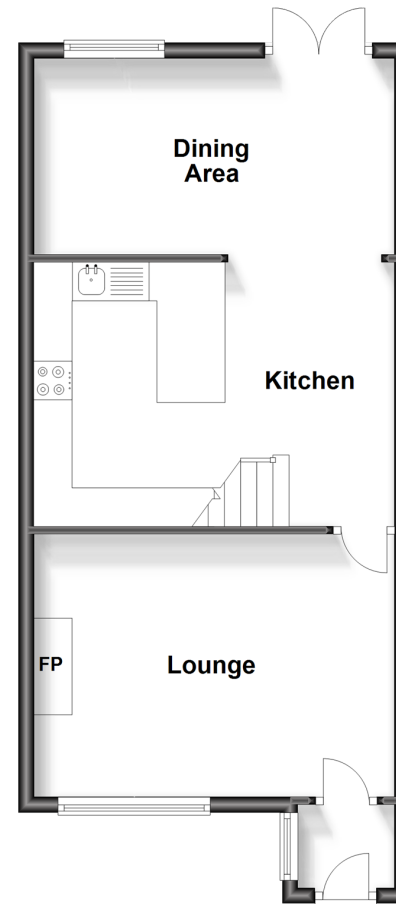
Front Garden

Rear Garden

Garage En-Bloc

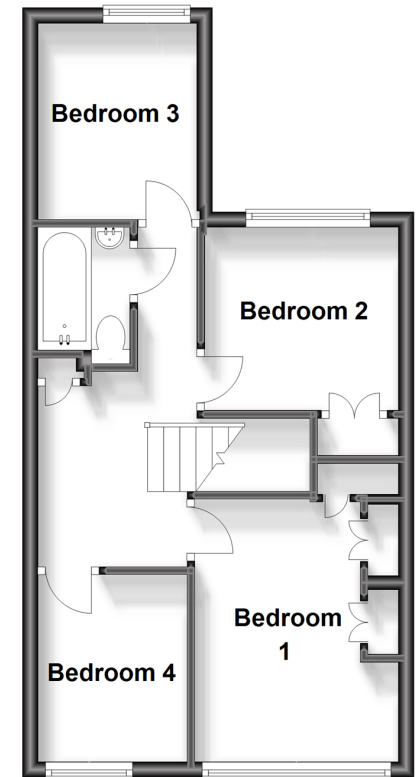
### Ground Floor

Approx. 46.5 sq. metres (500.8 sq. feet)



### First Floor

Approx. 38.1 sq. metres (409.9 sq. feet)



**Call Sittingbourne - 01795 427272 ■ [wardsofkent.co.uk](http://wardsofkent.co.uk)**

- Legal advice should be taken to verify fixtures/fittings, planning, alterations and/or lease details
- Appliances & services are untested, dimensions are approximate and floor plans are not to scale
- Through a Homewise Home For Life Plan people aged 60+ can secure this property for up to 59% less, by purchasing a Lifetime Lease.



11737233/20240419/KW/JS