



Price

£500,000

Freehold

5x  3x  2x 

**Bluebell Drive,
Sittingbourne, Kent,
ME10**

Wards
Helping you move forwards



Main features

- Immaculately presented decor throughout
- Plenty of off road parking plus garage
- Beautiful kitchen/diner leading out to a large sunny garden
- Spacious throughout with room to entertain family and friends
- Set in a highly sought after location, close to both Secondary and Grammar schools.

Accommodation

GROUND FLOOR

Entrance Hall
Cloakroom
Lounge: 24'6 x 11'7 (7.47m x 3.53m)
Kitchen/Diner: 16'7 x 13'4 (5.06m x 4.07m)
Utility Room: 6'1 x 5'3 (1.86m x 1.60m)
Dining Room: 16'0 x 10'0 (4.88m x 3.05m)

FIRST FLOOR

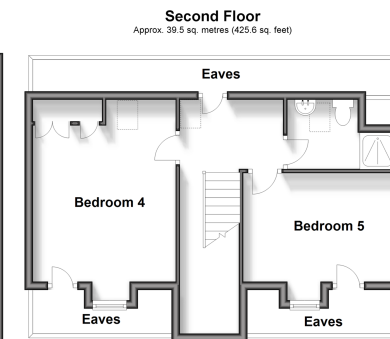
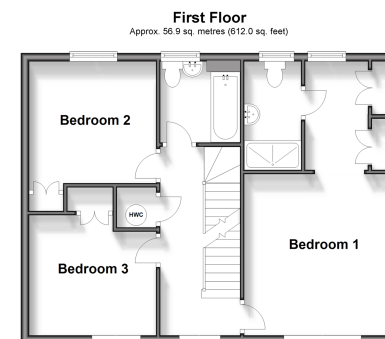
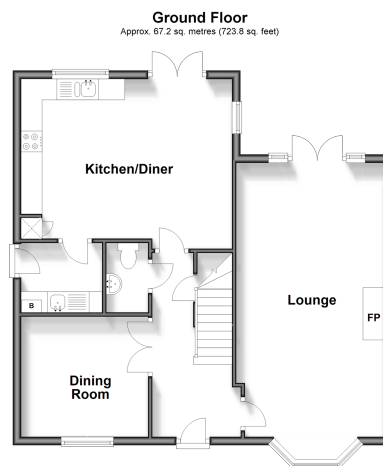
Landing
Bedroom 1: 21'5 x 11'9 (6.53m x 3.58m)
En-Suite Shower Room
Bedroom 2: 10'7 x 10'1 (3.23m x 3.08m)
Bedroom 3: 10'1 x 9'3 (3.08m x 2.82m)

SECOND FLOOR

Landing
Bedroom 4: 15'8 x 11'9 (4.78m x 3.58m)
Bedroom 5: 12'0 x 9'9 (3.66m x 2.97m)
Shower Room

OUTSIDE

Front Garden
Garage
Rear Garden



Call Sittingbourne - 01795 427272 ■ wardsofkent.co.uk

■ Legal advice should be taken to verify fixtures/fittings, planning, alterations and/or lease details

■ Appliances & services are untested, dimensions are approximate and floor plans are not to scale



11737351/20240502/KW/TB