



OVER 60?

Secure this property
for up to **59% less!**

Guide Price
£285,000

Freehold

3x  1x  1x 

**Rock Road,
Sittingbourne, Kent,
ME10**

Wards
Helping you move forwards



Main features

- Open plan lounge/dining area perfect for entertaining
- Spacious older style property
- Fantastic position a short walk from the High Street
- Close to train station
- Garage to the rear of the garden for extra storage

Accommodation

SPLIT LEVEL GROUND FLOOR

Porch

Lounge: 15'2 x 13'9 (4.63m x 4.19m)

Dining Area: 13'9 x 11'8 (4.19m x 3.56m)

Kitchen: 10'0 x 7'11 (3.05m x 2.41m)

Bathroom

FIRST FLOOR

Landing

Bedroom 1: 17'1 x 11'8 (5.21m x 3.56m)

Bedroom 2: 17'0 x 8'9 (5.19m x 2.67m)

Bedroom 3: 10'2 x 7'11 (3.10m x 2.41m)

OUTSIDE

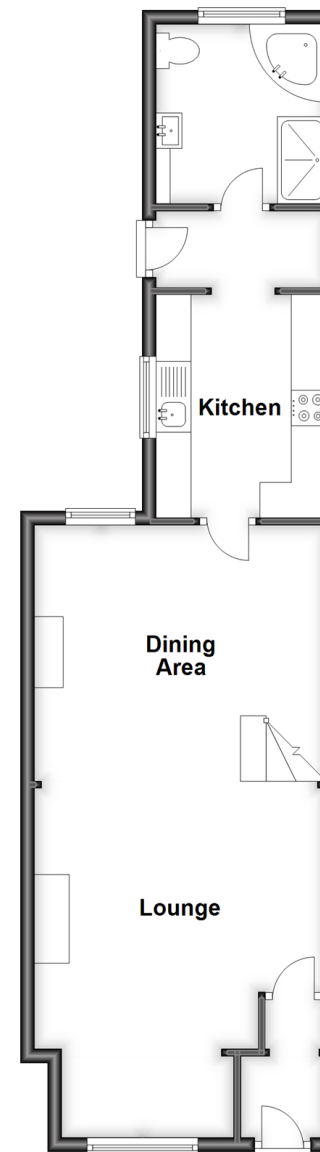
Front Courtyard

Rear Garden

Garage

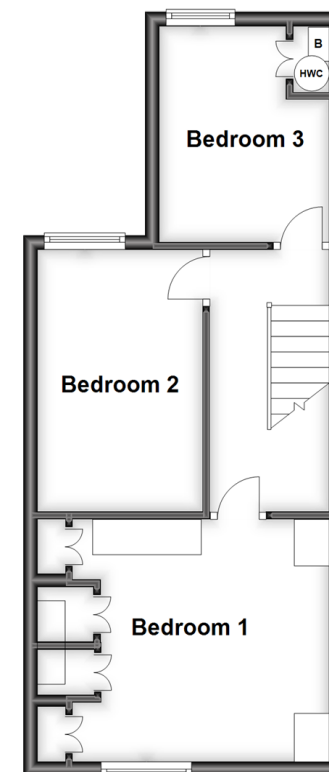
Split Level Ground Floor

Approx. 52.9 sq. metres (569.4 sq. feet)



First Floor

Approx. 37.9 sq. metres (407.9 sq. feet)



Call Sittingbourne - 01795 427272 ■ wardsofKent.co.uk

- Legal advice should be taken to verify fixtures/fittings, planning, alterations and/or lease details
- Appliances & services are untested, dimensions are approximate and floor plans are not to scale
- Through a Homewise Home For Life Plan people aged 60+ can secure this property for up to 59% less, by purchasing a Lifetime Lease.



11737760/20231122/MC1/JS