



Price
£775,000

Freehold

3x  2x  2x 

**Carn House, The
Vallance, Lynsted,
Sittingbourne, Kent,
ME9**

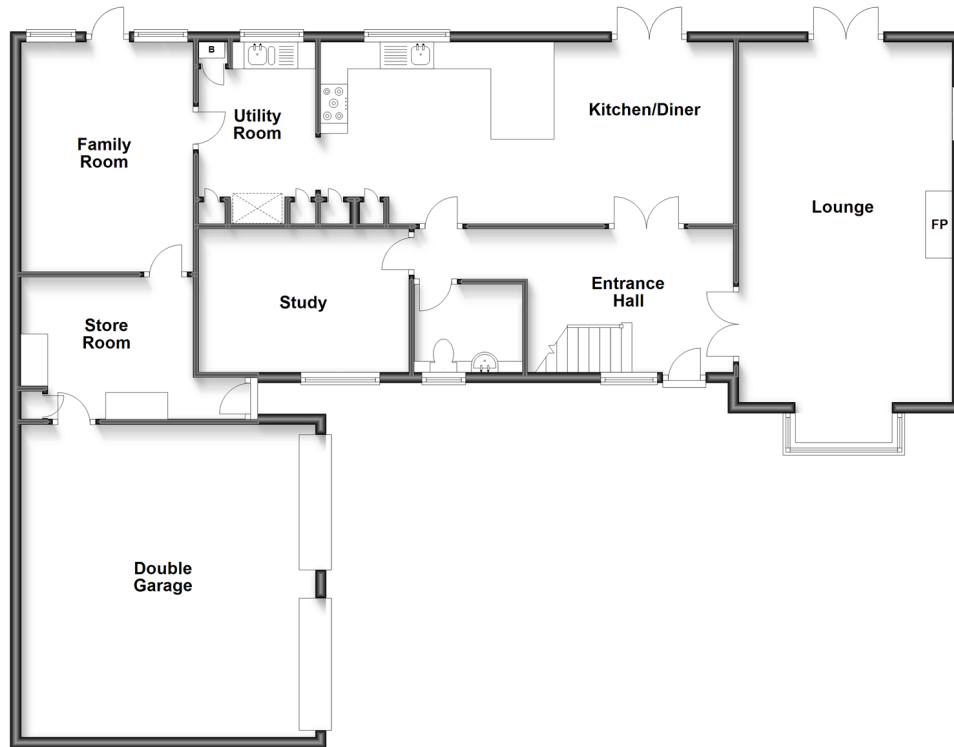
OVER 60?

Secure this property
for up to **59% less!**

Wards
Helping you move forwards

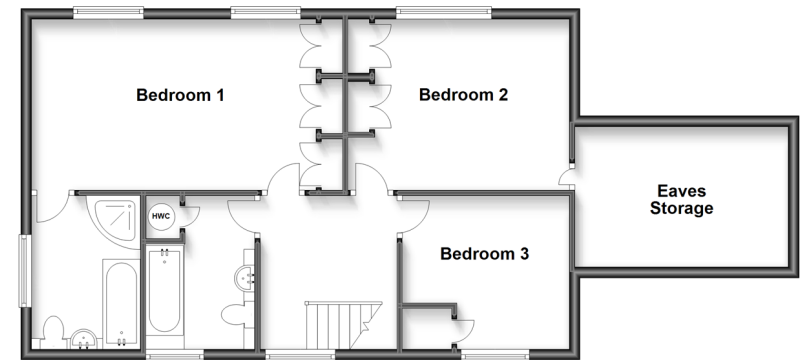
Ground Floor

Approx. 145.6 sq. metres (1567.7 sq. feet)



First Floor

Approx. 72.3 sq. metres (778.5 sq. feet)



Accommodation

GROUND FLOOR

Entrance Hall
Lounge: 27'2 x 13'4 (8.29m x 4.07m)
Cloakroom
Study: 13'4 x 8'8 (4.07m x 2.64m)

Kitchen/Diner: 25'2 x 11'0 (7.68m x 3.36m)
Utility Area: 9'1 x 7'1 (2.77m x 2.16m)
Family Room: 13'0 x 10'9 (3.97m x 3.28m)
Store Room

FIRST FLOOR

Landing
Bedroom 1: 16'1 x 10'11 (4.91m x 3.33m)
En-Suite Bathroom
Bedroom 2: 11'5 x 11'0 (3.48m x 3.36m)
Bedroom 3: 10'5 x 8'10 (3.18m x 2.69m)
Bathroom

OUTSIDE

Front Garden
Off Road Parking
Double Garage
Rear Garden



Main features

- Substantial detached property
- Sought after semi rural position
- Spacious and versatile accommodation that would suit a family for many years to come
- Quiet cul-de-sac location offering a fantastic degree of privacy meaning a quiet, peaceful life with your family
- No onward chain



Nearest Schools

Primary Schools: Lynsted and Norton Primary, Teynham Parochial C of E Primary, Bapchild and Tonge C of E Primary
Secondary Schools: Meadowfield School, Sittingbourne Community College, Highsted Grammar School



Transport Information

Train Stations: Teynham 1.7 miles, Sittingbourne 3.1 miles, Kemsley 4.1 miles



Address

Carn House, The Vallance, Lynsted, Sittingbourne, Kent, ME9



Directions

For directions to this property please contact us.





Call Sittingbourne Branch 01795 427272 ■ wardsofkent.co.uk



■ Legal advice should be taken to verify fixtures/fittings, planning, alterations and/or lease details ■ Appliances & services are untested, dimensions are approximate and floor plans are not to scale
 ■ Through a Homewise Home For Life Plan people aged 60+ can secure this property for up to 59% less, by purchasing a Lifetime Lease.



11737787/20230327/KC/JS