



Price
£325,000

Freehold

3x  1x  1x 

**Springfield Road,
Sittingbourne, Kent,
ME10**

OVER 60?

Secure this property
for up to **59% less!**

Wards
Helping you move forwards



Main features

- Off road parking to the side of the property
- Newly refurbished
- Open plan living space ideal for entertaining
- Rear garden with side access
- Close to local train station and town centre

Accommodation

GROUND FLOOR

Entrance Hall

Sitting Area: 10'9 x 10'1 (3.28m x 3.08m)

Lounge: 12'3 x 9'9 (3.74m x 2.97m)

Dining Area: 8'1 x 7'3 (2.47m x 2.21m)

Kitchen: 9'1 x 6'2 (2.77m x 1.88m)

Utility Room: 7'3 x 7'3 (2.21m x 2.21m)

FIRST FLOOR

Landing

Bathroom: 6'0 x 5'3 (1.83m x 1.60m)

Bedroom 2: 11'5 x 10'6 (3.48m x 3.20m)

Bedroom 1: 13'6 x 10'1 (4.12m x 3.08m)

Bedroom 3: 6'4 x 6'2 (1.93m x 1.88m)

OUTSIDE

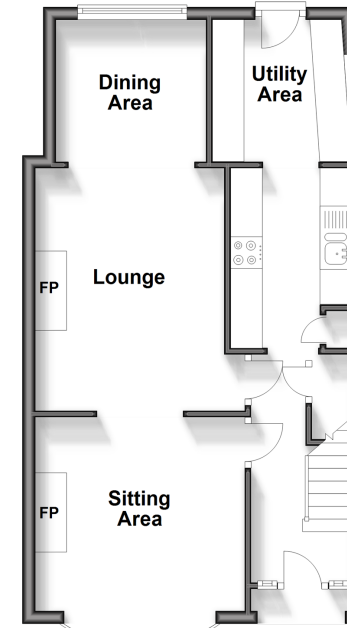
Front Garden

Off Road Parking

Rear Garden

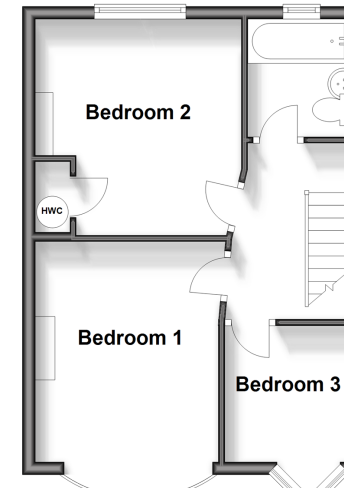
Ground Floor

Approx. 46.2 sq. metres (497.2 sq. feet)



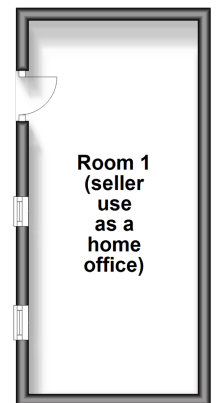
First Floor

Approx. 35.4 sq. metres (381.6 sq. feet)



Outbuilding

Approx. 15.9 sq. metres (170.6 sq. feet)



Call Sittingbourne - 01795 427272 ■ wardsofKent.co.uk

- Legal advice should be taken to verify fixtures/fittings, planning, alterations and/or lease details
- Appliances & services are untested, dimensions are approximate and floor plans are not to scale
- Through a Homewise Home For Life Plan people aged 60+ can secure this property for up to 59% less, by purchasing a Lifetime Lease.



11737879/20240410/MC1/MC1