



Price
£525,000

Freehold

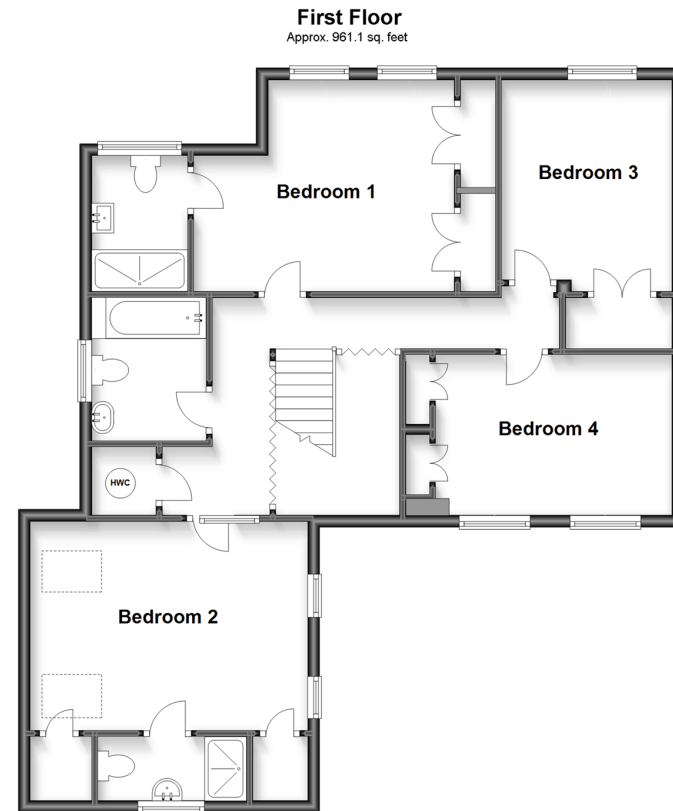
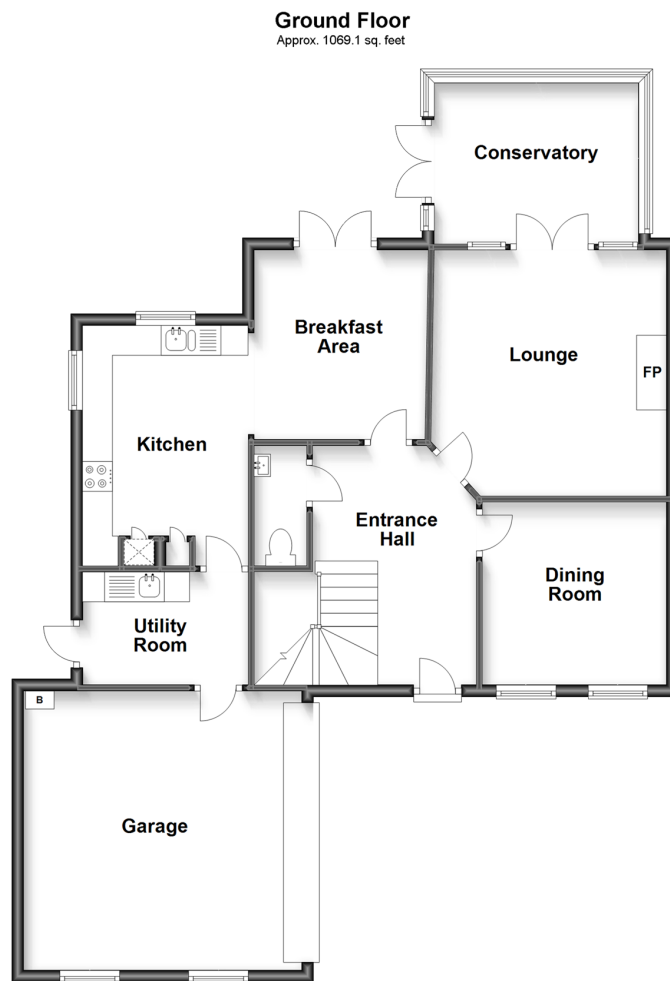
4x  3x  2x 

**High Street, Newington,
Sittingbourne, Kent,
ME9**

OVER 60?

Secure this property
for up to **59% less!**

Wards
Helping you move forwards



Accommodation

GROUND FLOOR

Entrance Hall
Cloakroom
Dining Room: 10'1" x 9'11" (3.08m x 3.02m)
Lounge: 13'8" x 12'6" (4.17m x 3.81m)
Conservatory: 11'2" x 9'8" (3.41m x 2.95m)

Kitchen: 11'9" x 9'2" (3.58m x 2.80m)
Breakfast Area: 13'0" x 9'1" (3.97m x 2.77m)
Utility Room: 9'10" x 4'10" (3.00m x 1.47m)

FIRST FLOOR

Landing
Bedroom 1: 13'10" x 11'6" (4.22m x 3.51m)
En-Suite Shower Room
Bedroom 2: 12'11" x 11'8" (3.94m x 3.56m)
En-Suite Shower Room
Bedroom 3: 12'3" x 9'11" (3.74m x 3.02m)
Bedroom 4: 12'5" x 9'1" (3.79m x 2.77m)
Bathroom

OUTSIDE

Front Garden
Off Road Parking
Double Garage
Rear Garden



Main features

- Stunning and spacious family home
- Close to local train station for commuters
- Immaculately presented inside and out and ready to move straight into
- Off road parking plus a double garage
- Versatile accommodation offering all the space you might ever need for your family



Nearest Schools

Primary Schools: Newington C of E Primary 0.5 miles, Lower Halstow Primary 1.7 miles, Hartlip Endowed C of E Primary 1.8 miles. Secondary Schools: The Westlands School 1.9 miles, Leigh Academy Rainham 2.7 miles, Integrated Services Programme 2.8 miles



Transport Information

Train Stations: Newington 0.3 miles, Sittingbourne 3.0 miles, Rainham 3.2 miles



Address

High Street, Newington, Sittingbourne, Kent, ME9



Directions

For directions to this property please contact us.



Wards
Helping you move forwards

Call Sittingbourne Branch 01795 427272 ■ wardsofkent.co.uk



- Legal advice should be taken to verify fixtures/fittings, planning, alterations and/or lease details
- Appliances & services are untested, dimensions are approximate and floor plans are not to scale
- Through a Homewise Home For Life Plan people aged 60+ can secure this property for up to 59% less, by purchasing a Lifetime Lease.



11737887/20230117/KC/JS