



Price
£315,000

Freehold

3x  1x  1x 

**Allenby Walk,
Sittingbourne, Kent,
ME10**

OVER 60?

Secure this property
for up to **59% less!**



Video Tour available

Wards
Helping you move forwards



Main features

- Quiet cul-de-sac position
- Popular Grove Park
- Spacious open plan living area, perfect for entertaining friends and family
- Close to popular schools, shops and travel links
- Fantastic condition ready to move into

Accommodation

GROUND FLOOR

Landing

Cloakroom

Lounge/Diner: (L-shaped) 12'4 x 10'6 (3.76m x 3.20m) plus 8'3 x 12'0 (2.52m x 3.66m)

Kitchen: 17'9 x 8'7 (5.41m x 2.62m)

FIRST FLOOR

Landing

Bedroom 1: 12'0 x 9'9 (3.66m x 2.97m)

Bedroom 2: 12'1 x 8'4 (3.69m x 2.54m)

Bedroom 3: 9'7 x 7'4 (2.92m x 2.24m)

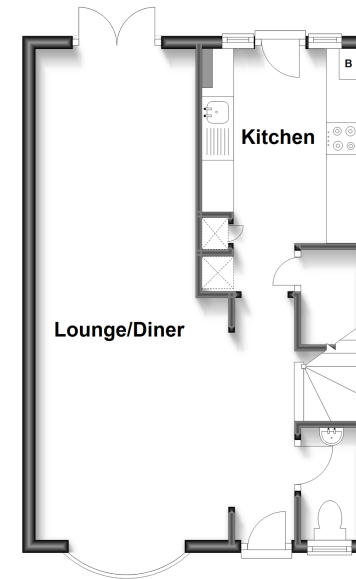
OUTSIDE

Front Garden

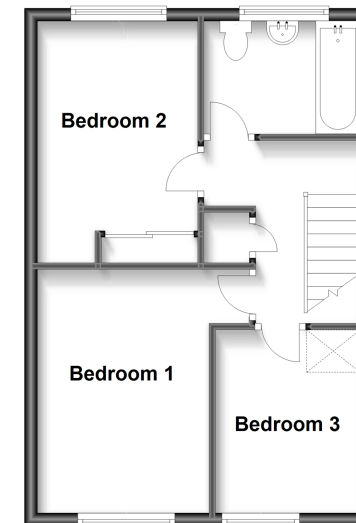
Garage

Rear Garden

Ground Floor
Approx. 39.6 sq. metres (425.9 sq. feet)



First Floor
Approx. 39.3 sq. metres (423.0 sq. feet)



Call Sittingbourne - 01795 427272 ■ wardsofKent.co.uk

- Legal advice should be taken to verify fixtures/fittings, planning, alterations and/or lease details
- Appliances & services are untested, dimensions are approximate and floor plans are not to scale
- Through a Homewise Home For Life Plan people aged 60+ can secure this property for up to 59% less, by purchasing a Lifetime Lease.



11737900/20240313/GS/TB