



OVER 60?

Secure this property
for up to **59% less!**

Price

£240,000

Freehold

2x  1x  1x 

**London Road, Teynham,
Sittingbourne, Kent,
ME9**

Wards
Helping you move forwards



Main features

- Well presented starter home
- Off road parking to the rear
- Handy cellar if you need that bit of extra storage
- Close to local train station for commuters, but also near to local shops and motorway links
- Perfect for first time buyers or buy to let investors looking for that real gem in this market that you can move straight into

Accommodation

GROUND FLOOR

Entrance Hall
 Kitchen/Breakfast Area: 12'9 x 9'2 (3.89m x 2.80m)
 Lounge/Dining Area: 11'9 x 9'7 (3.58m x 2.92m)
 Bathroom

BASEMENT

Cellar

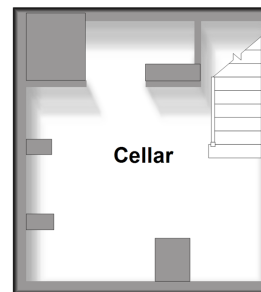
FIRST FLOOR

Landing
 Bedroom 1: 12'3 x 9'4 (3.74m x 2.85m)
 Bedroom 2: 12'0 x 10'3 (3.66m x 3.13m)

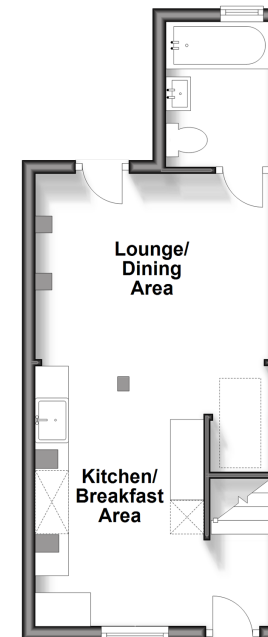
OUTSIDE

Rear Garden
 Off Road Parking

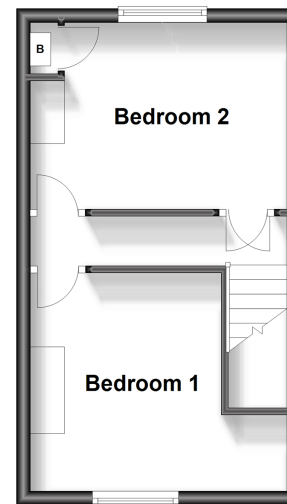
Basement
 Approx. 13.6 sq. metres (146.6 sq. feet)



Ground Floor
 Approx. 27.2 sq. metres (292.9 sq. feet)



First Floor
 Approx. 25.3 sq. metres (272.2 sq. feet)



Call Sittingbourne - 01795 427272 ■ wardsof Kent.co.uk

■ Legal advice should be taken to verify fixtures/fittings, planning, alterations and/or lease details
 ■ Through a Homewise Home For Life Plan people aged 60+ can secure this property for up to 59% less, by purchasing a Lifetime Lease.

■ Appliances & services are untested, dimensions are approximate and floor plans are not to scale



11737996/20240322/KC/JS