



OVER 60?

Secure this property
for up to **59% less!**

Price

£140,000

Freehold

1x  1x  1x 

**High Street,
Sittingbourne, Kent,
ME10**

Wards
Helping you move forwards



Main features

- Beautifully presented with neutral decor throughout
- Second floor open plan layout apartment
- No onward chain
- Allocated parking for 1 car
- Set on the High Street, walking distance to shops and amenities

Accommodation

SECOND FLOOR

Entrance Hall

Lounge/Kitchen: 18'0 x 14'1 (5.49m x 4.30m)

Bedroom : 13'9 x 11'6 (4.19m x 3.51m)

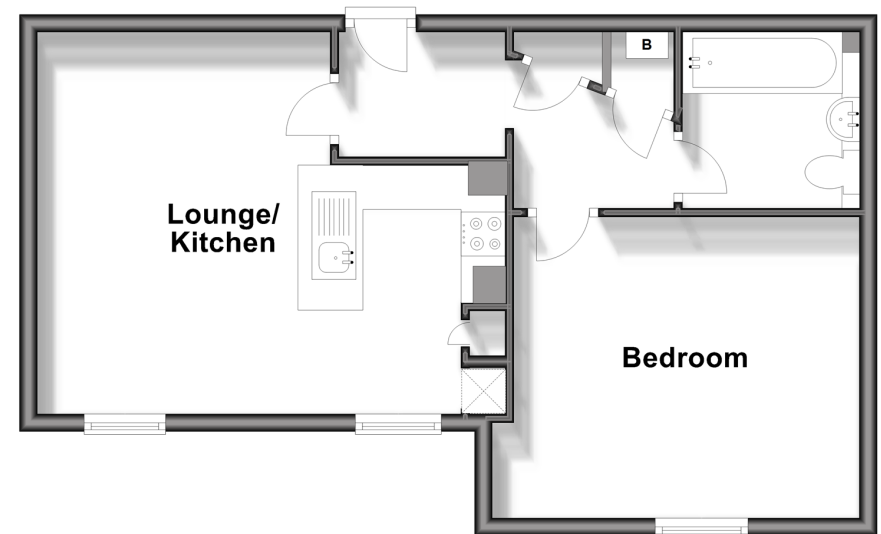
Bathroom

OUTSIDE

Allocated Parking Space

Second Floor

Approx. 45.5 sq. metres (489.7 sq. feet)



Call Sittingbourne - 01795 427272 ■ wardsofkent.co.uk

- Legal advice should be taken to verify fixtures/fittings, planning, alterations and/or lease details
- Appliances & services are untested, dimensions are approximate and floor plans are not to scale
- Through a Homewise Home For Life Plan people aged 60+ can secure this property for up to 59% less, by purchasing a Lifetime Lease.



11738039/20240124/TB/TB