



**Price**  
**£475,000**

**Freehold**

4x  2x  2x 

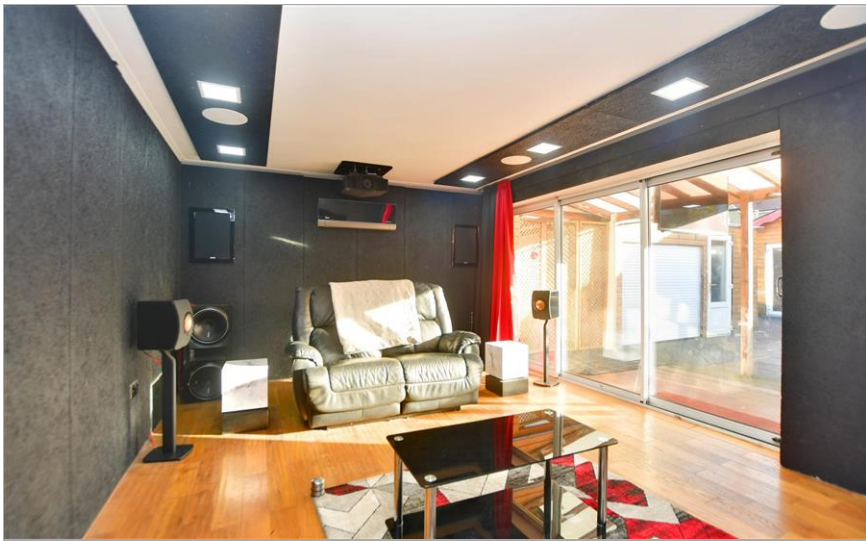
**Station Road, Teynham,  
Sittingbourne, Kent,  
ME9**

**OVER 60?**

Secure this property  
for up to **59% less!**

*Wards*  
Helping you move forwards





## Main features

- Off road parking to front with car-port/garage and more parking in rear garden
- Popular area of Teynham close to shops and train station
- There is a store room and summerhouse, so if you need office space, playroom, gym, gaming room or just extra storage then this property covers that adequately
- Versatile accommodation
- Spacious detached house with plenty of space, giving all the family the room they desire

## Accommodation

### GROUND FLOOR

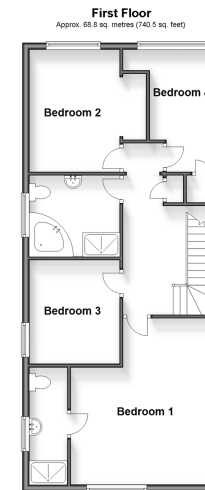
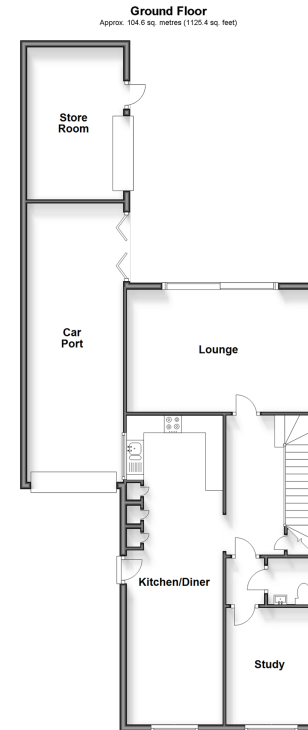
Entrance Hall  
Cloakroom  
Kitchen/Diner: 29'4 x 9'2 (8.95m x 2.80m)  
Study: 11'1 x 9'3 (3.38m x 2.82m)  
Lounge: 16'5 x 11'7 (5.01m x 3.53m)  
Store Room: 14'7 x 8'7 (4.45m x 2.62m)

### FIRST FLOOR

Landing  
Bedroom 1: 16'4 x 14'3 (4.98m x 4.35m)  
En-Suite Shower Room  
Bedroom 2: 11'11 x 6'10 (3.63m x 2.08m)  
Bedroom 3: 11'11 x 9'8 (3.63m x 2.95m)  
Bedroom 4: 9'11 x 9'4 (3.02m x 2.85m)  
Bathroom

### OUTSIDE

Off Road Parking To Front  
Carport/Garage  
Rear Garden  
Summer House/Workshop: 27'7 x 12'9 (8.41m x 3.89m)  
Parking To The Rear



**Call Sittingbourne - 01795 427272 ■ [wardsof Kent.co.uk](http://wardsof Kent.co.uk)**

■ Legal advice should be taken to verify fixtures/fittings, planning, alterations and/or lease details  
■ Through a Homewise Home For Life Plan people aged 60+ can secure this property for up to 59% less, by purchasing a Lifetime Lease.

■ Appliances & services are untested, dimensions are approximate and floor plans are not to scale



11738146/20231116/KC/JS