



OVER 60?

Secure this property
for up to **59% less!**

Price
£300,000

Freehold

3x  2x  1x 

**Church Mews, The
Street, Newnham,
Sittingbourne, Kent,
ME9**

Wards
Helping you move forwards



Main features

- Beautifully presented with neutral decor throughout
- Garage and off road parking to the rear
- Large conservatory leading out to a sunny rear garden
- Spacious throughout with room to entertain
- Set in prime location close to local shops, schools and amenities

Accommodation

GROUND FLOOR

Entrance Hall
Cloakroom
Kitchen: 10'0 x 8'1 (3.05m x 2.47m)
Lounge/Diner: 16'5 x 15'3 (5.01m x 4.65m)
Conservatory: 13'0 x 9'4 (3.97m x 2.85m)

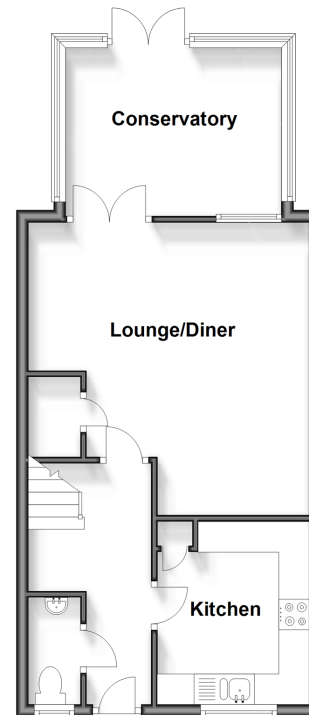
FIRST FLOOR

Landing
Bedroom 1: 12'4 x 8'6 (3.76m x 2.59m)
En-Suite Shower Room
Bedroom 2: 11'8 x 8'2 (3.56m x 2.49m)
Bedroom 3: 9'0 x 6'8 (2.75m x 2.03m)
Bathroom

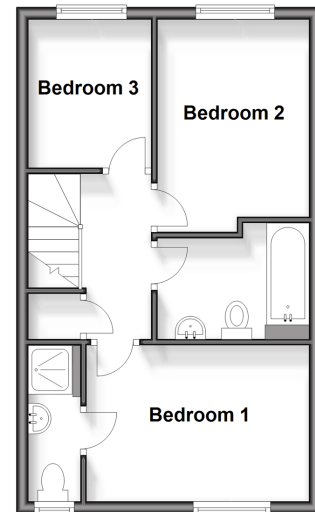
OUTSIDE

Front Garden
Garage
Off Road Parking
Rear Garden

Ground Floor
Approx. 503.0 sq. feet



First Floor
Approx. 393.6 sq. feet



Call Sittingbourne - 01795 427272 ■ wardsofkent.co.uk

■ Legal advice should be taken to verify fixtures/fittings, planning, alterations and/or lease details
■ Through a Homewise Home For Life Plan people aged 60+ can secure this property for up to 59% less, by purchasing a Lifetime Lease.

■ Appliances & services are untested, dimensions are approximate and floor plans are not to scale



11738249/20240419/MC1/TB