



Price
£300,000

Freehold

3x  2x  1x 

**Eveas Drive,
Sittingbourne, Kent,
ME10**

OVER 60?

Secure this property
for up to **59% less!**

Wards
Helping you move forwards



Main features

- Immaculately presented with modern decor throughout
- Off road parking to the side
- En-suite shower room to bedroom 1
- Set in a quiet residential area ideal for growing families
- Spacious throughout and a sunny garden, perfect for entertaining

Accommodation

GROUND FLOOR

Entrance Hall

Lounge/Diner: 19'1 x 16'4 (5.82m x 4.98m)

Kitchen: 12'7 x 8'7 (3.84m x 2.62m)

Cloakroom

FIRST FLOOR

Landing

Bedroom 1: 12'4 x 9'5 (3.76m x 2.87m)

En-Suite Shower Room

Bedroom 2: 12'3 x 9'0 (3.74m x 2.75m)

Bedroom 3: 8'8 x 8'4 (2.64m x 2.54m)

Bathroom

OUTSIDE

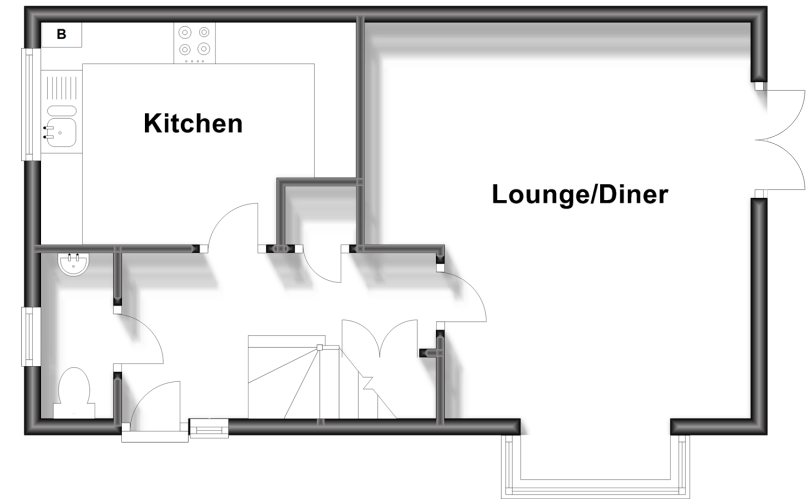
Front Garden

Off Road Parking

Rear Garden

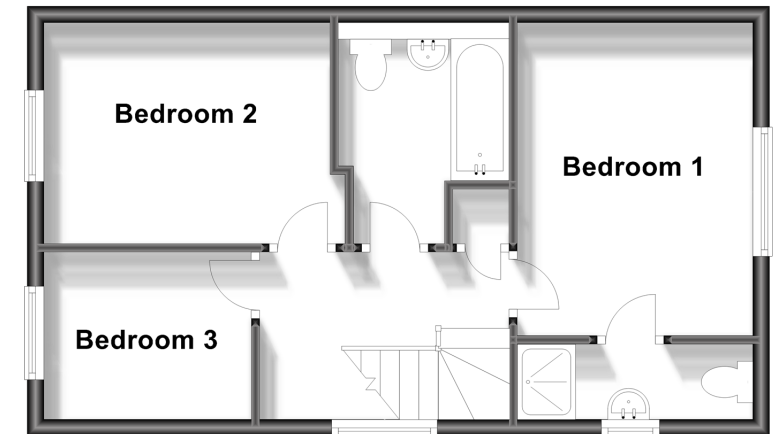
Ground Floor

Approx. 41.5 sq. metres (446.2 sq. feet)



First Floor

Approx. 40.8 sq. metres (439.1 sq. feet)



Call Sittingbourne - 01795 427272 ■ wardsofKent.co.uk

- Legal advice should be taken to verify fixtures/fittings, planning, alterations and/or lease details
- Appliances & services are untested, dimensions are approximate and floor plans are not to scale
- Through a Homewise Home For Life Plan people aged 60+ can secure this property for up to 59% less, by purchasing a Lifetime Lease.



11738266/20240502/TB/TB