



Guide Price
£270,000

Freehold

2x  1x  1x 

**Springvale, Iwade,
Sittingbourne, Kent,
ME9**

OVER 60?

Secure this property
for up to **59% less!**

Wards
Helping you move forwards



Main features

- **Garage and off road parking to the side**
- **Spacious throughout with room to entertain**
- **Set in a beautiful village in a cul-de-sac location**
- **Close to local primary school, shops and amenities**
- **Perfect for first time buyers and investors alike**

Accommodation

GROUND FLOOR

Entrance Hall

Lounge: 12'0 x 11'0 (3.66m x 3.36m)

Dining Area: 11'8 x 7'3 (3.56m x 2.21m)

Kitchen: 11'5 x 7'4 (3.48m x 2.24m)

Conservatory: 13'1 x 5'6 (3.99m x 1.68m)

FIRST FLOOR

Landing

Bedroom 1: 14'1 x 12'6 (4.30m x 3.81m)

Bedroom 2: 12'2 x 7'7 (3.71m x 2.31m)

Bathroom

OUTSIDE

Front Garden

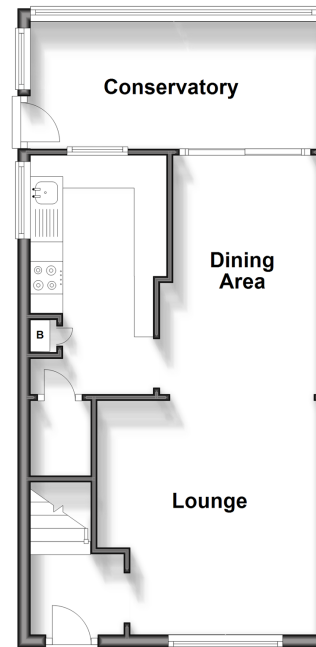
Off Road Parking

Garage

Rear Garden

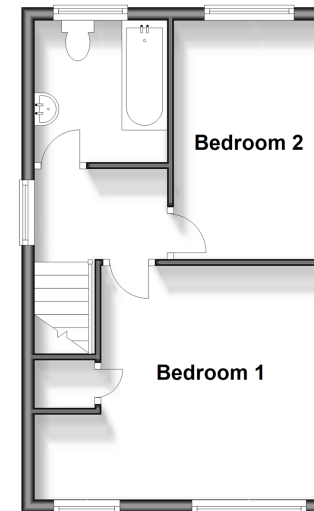
Ground Floor

Approx. 41.5 sq. metres (447.0 sq. feet)



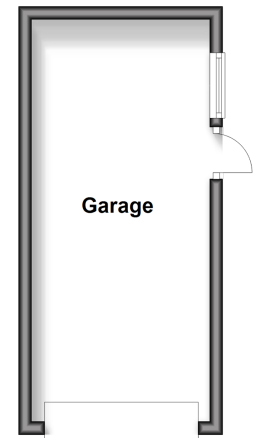
First Floor

Approx. 32.5 sq. metres (349.5 sq. feet)



Outbuilding

Approx. 0.0 sq. metres (0.0 sq. feet)



Call Sittingbourne - 01795 427272 ■ wardsofkent.co.uk

■ Legal advice should be taken to verify fixtures/fittings, planning, alterations and/or lease details
 ■ Through a Homewise Home For Life Plan people aged 60+ can secure this property for up to 59% less, by purchasing a Lifetime Lease.

■ Appliances & services are untested, dimensions are approximate and floor plans are not to scale



11738269/20240424/KW/TB