



Guide Price
£325,000

Freehold

3x  1x  1x 

**Fulston Place,
Sittingbourne, Kent,
ME10**

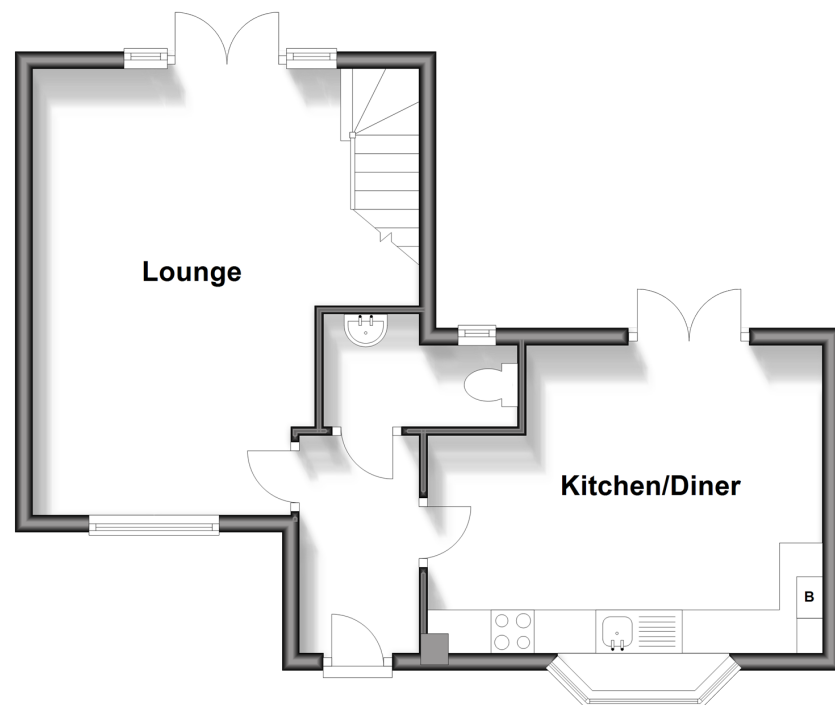
OVER 60?

Secure this property
for up to **59% less!**

Wards
Helping you move forwards

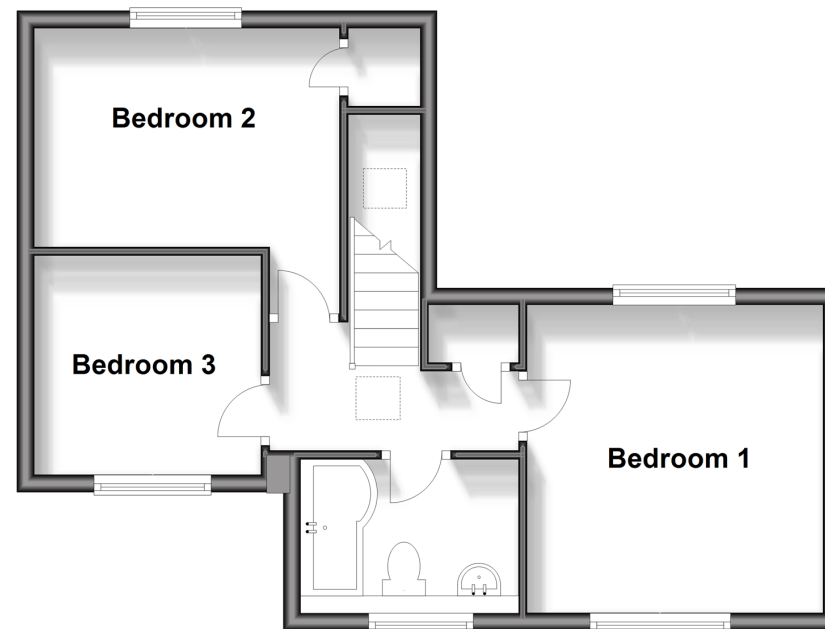
Ground Floor

Approx. 42.1 sq. metres (453.7 sq. feet)



First Floor

Approx. 41.8 sq. metres (449.6 sq. feet)



Accommodation

GROUND FLOOR

Entrance Hall
Cloakroom
Kitchen/Diner: 15'2 x 11'7 (4.63m x 3.53m)
Lounge: 16'9 x 10'7 (5.11m x 3.23m)

FIRST FLOOR

Landing
Bedroom 1: 11'7 x 11'5 (3.53m x 3.48m)
Bedroom 2: 11'8 x 8'2 (3.56m x 2.49m)
Bedroom 3: 8'7 x 8'4 (2.62m x 2.54m)
Bathroom

OUTSIDE

Off Road Parking
Front Garden
Rear Garden



Main features

- Off road parking to the front
- Still under new build warranty
- Immaculate neutral decor throughout, no decorating needed
- Close to schools, shops and also the train station
- Highly sought after location in Sittingbourne ideal for families



Nearest Schools

Primary Schools: South Avenue Junior School 0.1 miles, Canterbury Road Primary 1.1 miles, Rodmersham School 1.1 miles
Secondary Schools: Borden Grammar School 0.6 miles, Highsted Grammar School 0.6 miles



Transport Information

Train Stations: Sittingbourne 1.0 miles, Kemsley 2.6 miles, Swale 3.7 miles



Address

Fulston Place, Sittingbourne, Kent, ME10



Directions

For directions to this property please contact us.





Wards
Helping you move forwards

Call Sittingbourne Branch 01795 427272 ■ wardsofkent.co.uk



■ Legal advice should be taken to verify fixtures/fittings, planning, alterations and/or lease details ■ Appliances & services are untested, dimensions are approximate and floor plans are not to scale
■ Through a Homewise Home For Life Plan people aged 60+ can secure this property for up to 59% less, by purchasing a Lifetime Lease.



11738310/20240418/MC1/MC1