



OVER 60?

Secure this property
for up to **59% less!**

Price

£290,000

Freehold

3x  1x  1x 

**Satis Avenue,
Sittingbourne, Kent,
ME10**

Wards
Helping you move forwards



Main features

- Sunny aspect rear garden
- Close to schools, shops and local amenities
- Off road parking to front of property
- Immaculately presented with modern decor throughout
- Perfect for first time buyers and investors alike

Accommodation

GROUND FLOOR

Porch

Lounge: 13'8 x 12'9 (4.17m x 3.89m)

Kitchen: 13'7 x 10'5 (4.14m x 3.18m)

FIRST FLOOR

Landing

Bedroom 1: 13'8 x 9'6 (4.17m x 2.90m)

Bedroom 2: 9'5 x 6'7 (2.87m x 2.01m)

Bedroom 3: 6'9 x 6'5 (2.06m x 1.96m)

Bathroom

OUTSIDE

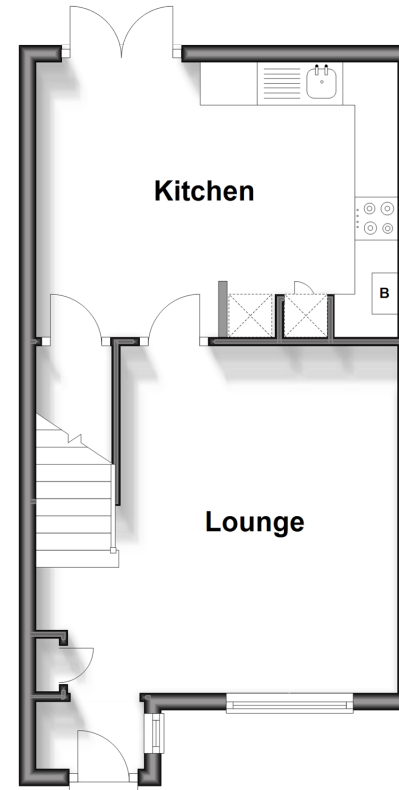
Front Garden

Off Road Parking

Rear Garden

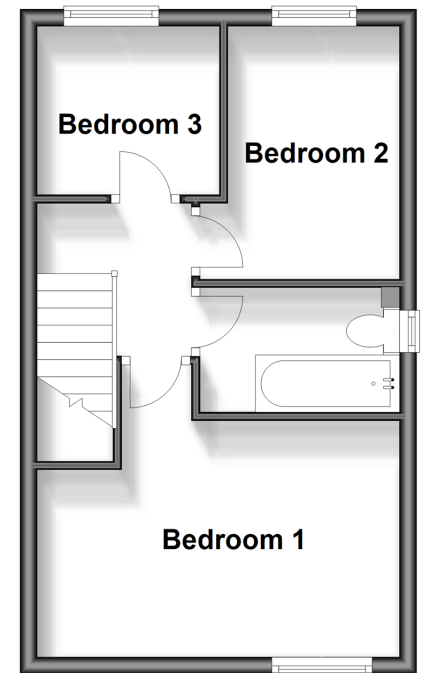
Ground Floor

Approx. 32.1 sq. metres (345.7 sq. feet)



First Floor

Approx. 31.0 sq. metres (333.7 sq. feet)



Call Sittingbourne - 01795 427272 ■ wardsof Kent.co.uk

- Legal advice should be taken to verify fixtures/fittings, planning, alterations and/or lease details
- Appliances & services are untested, dimensions are approximate and floor plans are not to scale
- Through a Homewise Home For Life Plan people aged 60+ can secure this property for up to 59% less, by purchasing a Lifetime Lease.



11738316/20240412/KC/MC1