



OVER 60?

Secure this property
for up to **59% less!**



Video Tour available

Price

£600,000

Freehold

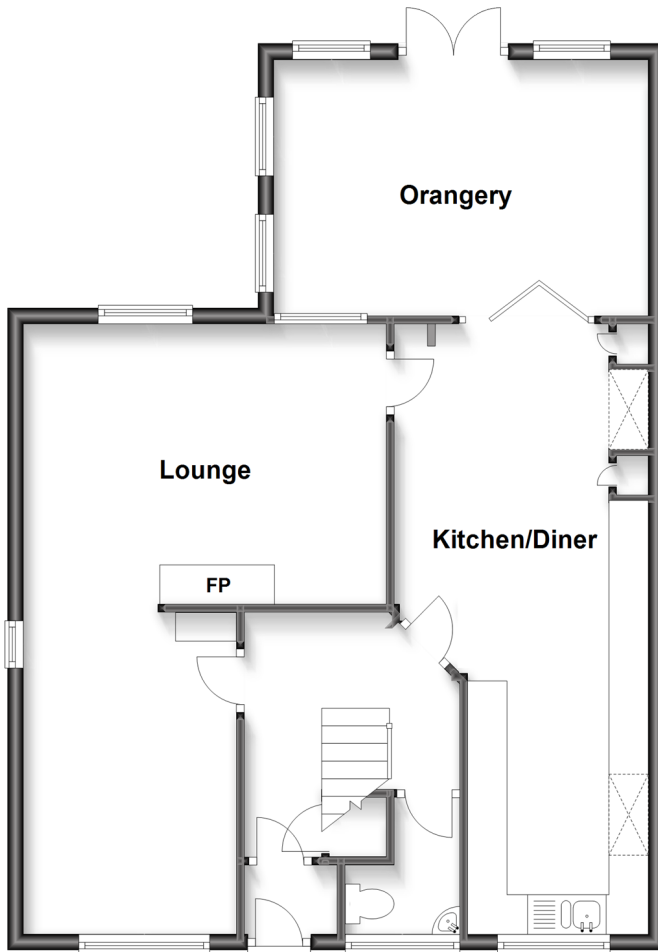
4x  2x  2x 

**Goldsworth Drive,
Strood, Rochester, Kent,
ME2**

Wards
Helping you move forwards

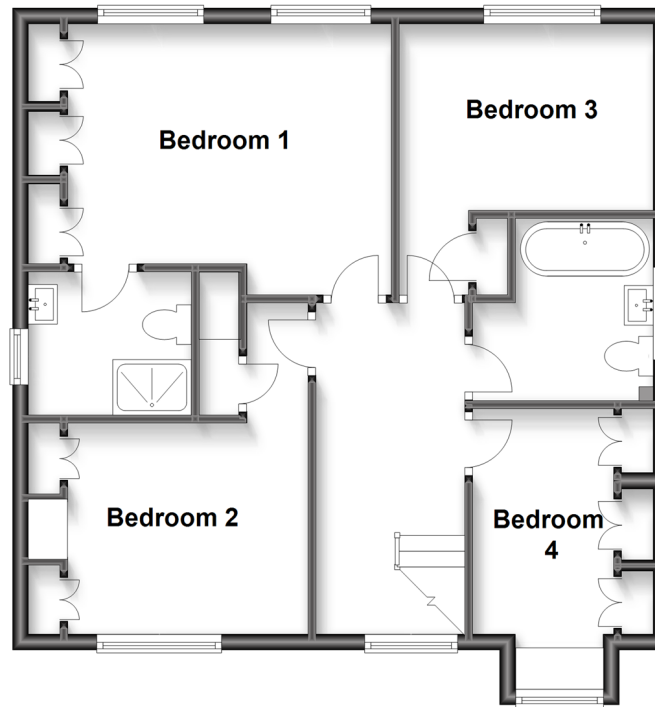
Ground Floor

Approx. 77.0 sq. metres (828.8 sq. feet)



First Floor

Approx. 61.9 sq. metres (666.3 sq. feet)



Accommodation

GROUND FLOOR

Entrance Hall

Cloakroom

Lounge

Kitchen/Diner: 25'9 x 13'9 (7.85m x 4.19m)

Orangery : 15'7 x 10'6 (4.75m x 3.20m)

FIRST FLOOR

Landing

Bedroom 1: 13'2 x 10'2 (4.02m x 3.10m)

En-Suite Shower Room: 7'5 x 5'7 (2.26m x 1.70m)

Bedroom 2: 11'3 x 9'1 (3.43m x 2.77m)

Bedroom 3: 11'1 x 8'2 (3.38m x 2.49m)

Bedroom 4: 9'1 x 6'1 (2.77m x 1.86m)

Bathroom: 8'0 x 7'8 (2.44m x 2.34m)

OUTSIDE

Front Garden

Rear Garden

Driveway

Double Garage



Main features

- 4 bedroom detached house
- Double garage and driveway
- En-suite shower room
- Sought after location close to the town centre and train station
- A spacious orangery that will be perfect for extra living space



Nearest Schools

Primary Schools: Temple Mill Primary 0.3 miles, Gordon Junior School 0.8 miles, English Martyrs' Catholic Primary 0.8 miles
Secondary Schools: Abbey Court Community Special School 1.2 miles, King's School, Rochester 1.5 miles



Transport Information

Train Stations: Strood 1.1 miles, Rochester 1.8 miles, Cuxton 2.5 miles



Address

Goldsworth Drive, Strood, Rochester, Kent, ME2



Directions

For directions to this property please contact us.



Wards
Helping you move forwards

Call Strood Branch 01634 716597 ■ wardsofkent.co.uk



■ Legal advice should be taken to verify fixtures/fittings, planning, alterations and/or lease details ■ Appliances & services are untested, dimensions are approximate and floor plans are not to scale
■ Through a Homewise Home For Life Plan people aged 60+ can secure this property for up to 59% less, by purchasing a Lifetime Lease.



11825958/20230206/DV/CM