



Price

£675,000

Freehold

5x  2x  2x 

**Hollywood Lane,
Frindsbury, Rochester,
Kent, ME3**

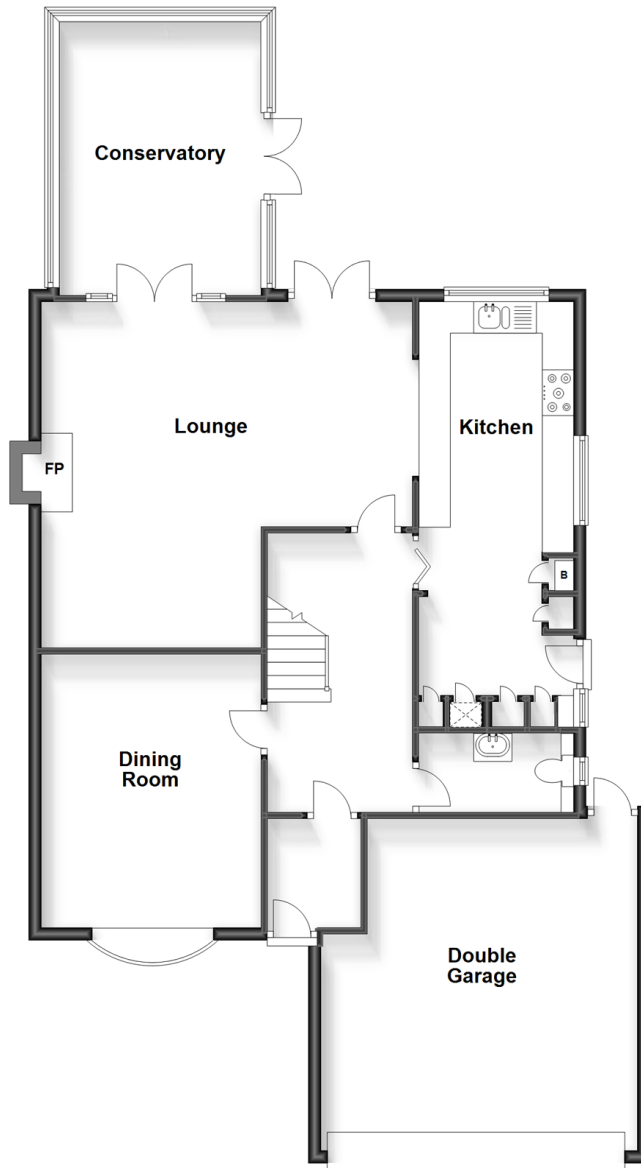
OVER 60?

Secure this property
for up to **59% less!**

Wards
Helping you move forwards

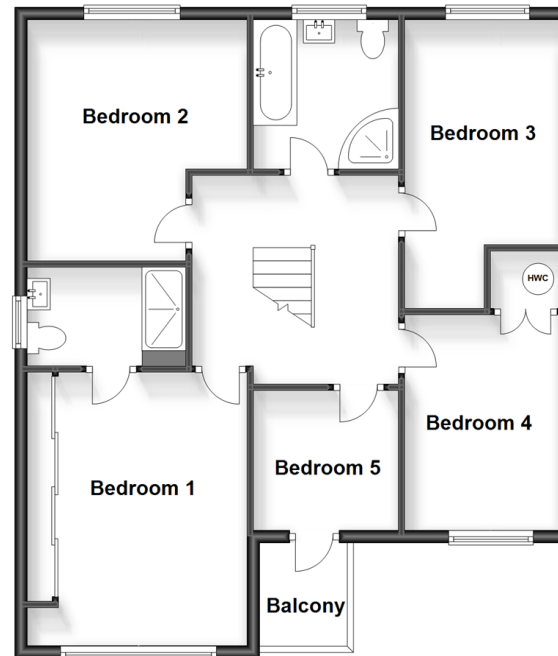
Ground Floor

Approx. 119.1 sq. metres (1282.1 sq. feet)



First Floor

Approx. 75.6 sq. metres (813.2 sq. feet)



Accommodation

GROUND FLOOR

Entrance Hall

Cloakroom

Lounge: 19'4 (5.90m) x 17'10 (5.44m) narrowing to 11'6 (3.51m)

Dining Room : 11'5 x 11'4 (3.48m x 3.46m)

Conservatory: 14'2 x 11'6 (4.32m x 3.51m)

Kitchen: 22'2 x 8'4 (6.76m x 2.54m)

FIRST FLOOR

Landing

Bedroom 1: 14'0 x 11'4 (4.27m x 3.46m)

En-Suite Shower Room

Bedroom 2: 12'7 x 11'2 (3.84m x 3.41m)

Bedroom 3: 12'0 x 8'4 (3.66m x 2.54m)

Bedroom 4: 11'8 x 8'4 (3.56m x 2.54m)

Bedroom 5: 7'9 x 7'6 (2.36m x 2.29m)

Bathroom: 8'0 x 7'9 (2.44m x 2.36m)

OUTSIDE

Driveway

Double Garage

Rear Garden

Summer House



Main features

- Fabulous family home in sought after location
- Double garage, driveway for several vehicles
- Large mature rear garden, summer house that will be ideal for entertaining
- Conservatory, modern fitted kitchen and bathrooms
- Close to access for A2/M2
- Good schools, amenities and mainline railway station within a short distance



Nearest Schools

Primary Schools: Hilltop Primary 0.6 miles, Wainscott Primary 0.7 miles, Temple Mill Primary 0.8 miles
 Secondary Schools: Abbey Court Community Special School 1.4 miles, King's School, Rochester 2.0 miles, Fort Pitt Grammar School 2.1 miles



Transport Information

Train Stations: Strood 1.6 miles, Rochester 2.3 miles



Address

Hollywood Lane, Frindsbury, Rochester, Kent, ME3



Directions

For directions to this property please contact us.



Wards
Helping you move forwards

Call Strood Branch 01634 716597 ■ wardsofkent.co.uk



■ Legal advice should be taken to verify fixtures/fittings, planning, alterations and/or lease details ■ Appliances & services are untested, dimensions are approximate and floor plans are not to scale
■ Through a Homewise Home For Life Plan people aged 60+ can secure this property for up to 59% less, by purchasing a Lifetime Lease.



11827042/20240307/JC/JC