



**OVER 60?**

Secure this property  
for up to **59% less!**

**Price**  
**£250,000**

**Freehold**

3x  1x  2x 

**Grange Road, Strood,  
Rochester, Kent, ME2**

*Wards*  
Helping you move forwards





## Main features

- Close to town centre and railway station
- An ideal first time buy or investment opportunity
- Lounge and separate dining room
- Modern kitchen with integrated appliances
- Workshop in the garden

## Accommodation

### GROUND FLOOR

Entrance Porch  
Dining Room : 11'2 x 10'2 (3.41m x 3.10m)  
Lounge : 11'6 x 10'10 (3.51m x 3.30m)  
Kitchen: 10'1 x 6'5 (3.08m x 1.96m)  
Rear Lobby  
Bathroom

### SPLIT LEVEL FIRST FLOOR

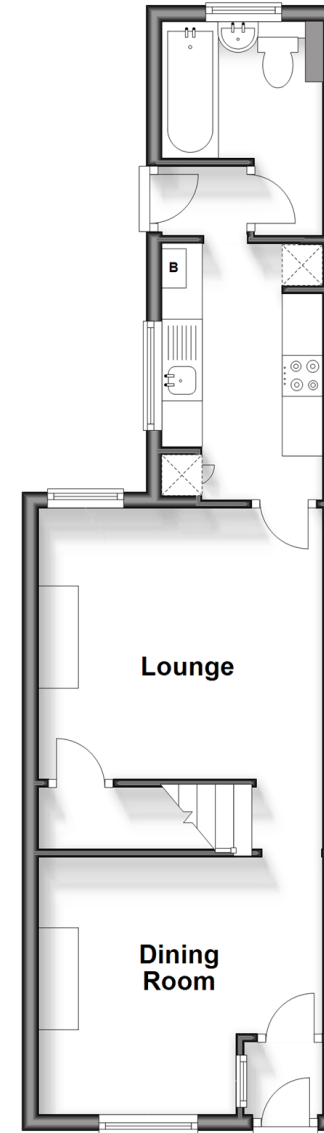
Landing  
Bedroom 1 : 11'6 x 10'10 (3.51m x 3.30m)  
Bedroom 2 : 10'6 x 10'1 (3.20m x 3.08m)  
Bedroom 3 : 10'0 x 6'9 (3.05m x 2.06m)

### OUTSIDE

Front Garden  
Rear Garden

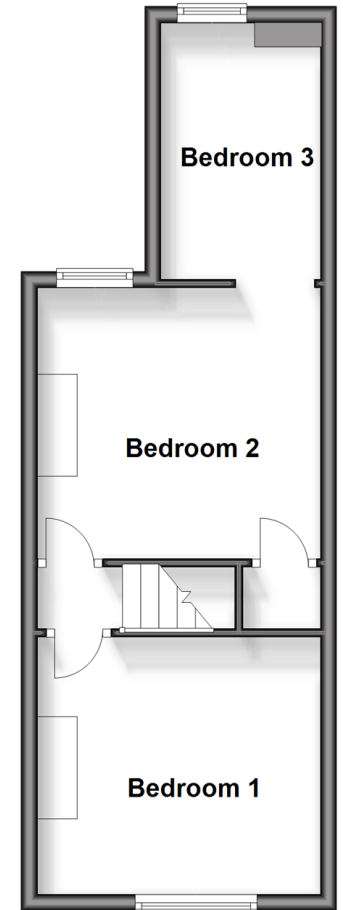
### Ground Floor

Approx. 38.1 sq. metres (409.7 sq. feet)



### Split Level First Floor

Approx. 32.7 sq. metres (351.5 sq. feet)



**Call Strood - 01634 716597 ■ [wardsofkent.co.uk](http://wardsofkent.co.uk)**

- Legal advice should be taken to verify fixtures/fittings, planning, alterations and/or lease details
- Appliances & services are untested, dimensions are approximate and floor plans are not to scale
- Through a Homewise Home For Life Plan people aged 60+ can secure this property for up to 59% less, by purchasing a Lifetime Lease.



11834027/20240426/DV/CM