



Guide Price
£550,000

Freehold

4x  2x  3x 

**Gypsy Way, High
Halstow, Rochester,
Kent, ME3**

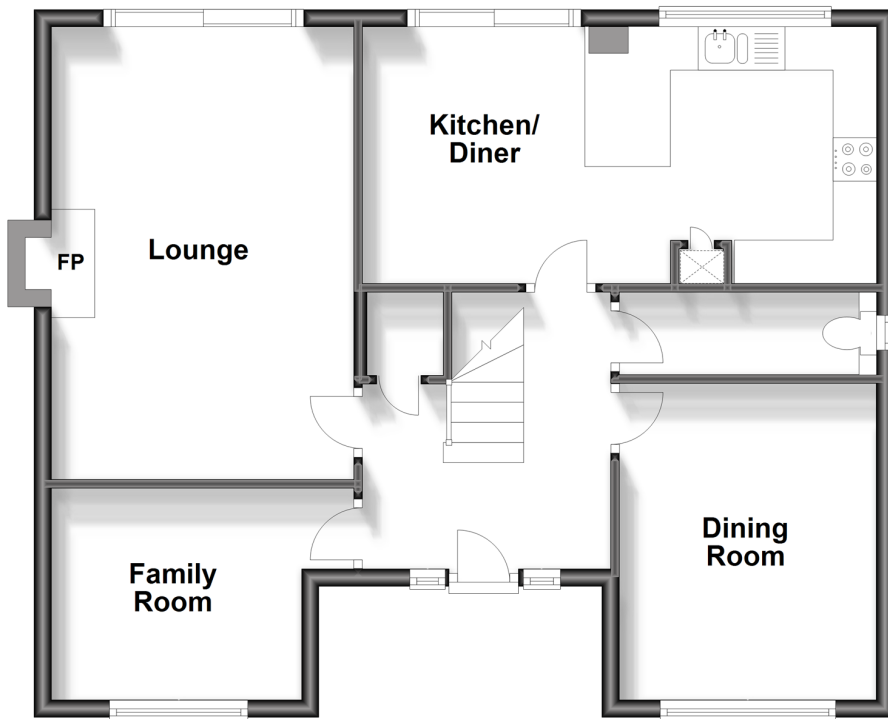
OVER 60?

Secure this property
for up to **59% less!**

Wards
Helping you move forwards

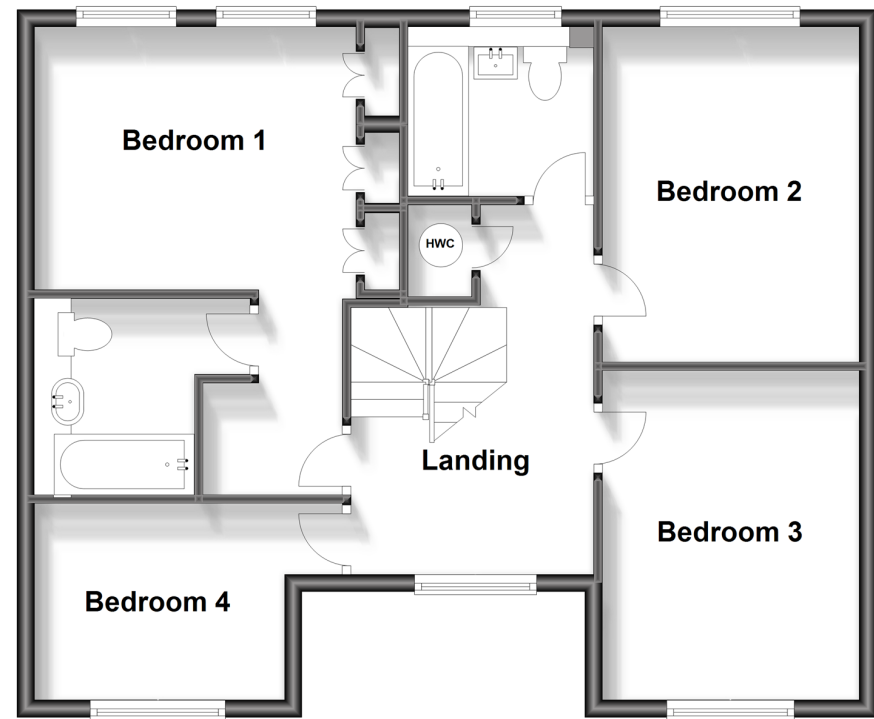
Ground Floor

Approx. 68.2 sq. metres (733.9 sq. feet)



First Floor

Approx. 68.4 sq. metres (736.4 sq. feet)



Accommodation

GROUND FLOOR

Entrance Hall: 9'0 x 7'1 (2.75m x 2.16m)
 Family Room: 9'9 x 8'0 (2.97m x 2.44m)
 Lounge : 17'6 x 11'7 (5.34m x 3.53m)
 Dining Room : 12'2 x 9'9 (3.71m x 2.97m)
 Kitchen/Diner : 19'5 x 9'10 (5.92m x 3.00m)
 Toilet

FIRST FLOOR

Landing
 Bedroom 1: 12'2 x 10'0 (3.71m x 3.05m)
 En-Suite Bathroom : 7'0 x 5'6 (2.14m x 1.68m)
 Bedroom 2: 12'7 x 9'10 (3.84m x 3.00m)
 Bedroom 3: 13'4 x 10'0 (4.07m x 3.05m)
 Bedroom 4: 9'10 x 8'0 (3.00m x 2.44m)
 Bathroom : 7'0 x 5'6 (2.14m x 1.68m)

OUTSIDE

Double Garage
 Driveway
 Rear Garden



Main features

- Fabulous detached family home in village location
- Overlooking cricket grounds and located in a quiet cul-de-sac position
- Detached double garage & secluded garden
- Close to local amenities including convenience store and primary school
- Surrounding open green spaces and countryside walks



Nearest Schools

Primary: High Halstow Primary, Hoo St Werburgh Primary and Marlborough Centre
Secondary: Hundred of Hoo, Fort Pitt Grammar



Transport Information

Train Stations: Strood 6.3 miles, Cuxton 6.8 miles, Rochester 6.9 miles



Address

Gypsy Way, High Halstow, Rochester, Kent, ME3



Directions

For directions to this property please contact us.



Call Strood Branch 01634 716597 ■ wardsofkent.co.uk



- Legal advice should be taken to verify fixtures/fittings, planning, alterations and/or lease details
- Appliances & services are untested, dimensions are approximate and floor plans are not to scale
- Through a Homewise Home For Life Plan people aged 60+ can secure this property for up to 59% less, by purchasing a Lifetime Lease.



11835081/20230927/DV/JC