



OVER 60?

Secure this property
for up to **59% less!**

Price

£220,000

Freehold

1x  1x  1x 

**Dorchester Close, Cliffe
Woods, Rochester, Kent,
ME3**

Wards
Helping you move forwards



Main features

- Private garden
- Conservatory
- Quiet cul-de-sac and a village location
- Allocated parking space for 1 car
- Walking distance to local shops and surrounding countryside walks

Accommodation

GROUND FLOOR

Entrance Hall

Kitchen/Living Area: 18'0 x 9'5 (5.49m x 2.87m)

Conservatory : 9'10 x 9'4 (3.00m x 2.85m)

Kitchen : 14'11 x 5'0 (4.55m x 1.53m)

FIRST FLOOR

Landing

Bedroom : 13'7 x 11'10 (4.14m x 3.61m)

Shower Room: 7'7 x 4'9 (2.31m x 1.45m)

OUTSIDE

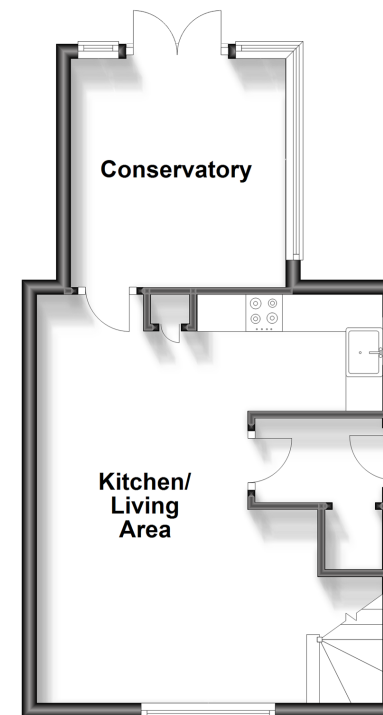
Front Garden

Rear Garden

Allocated Parking Space

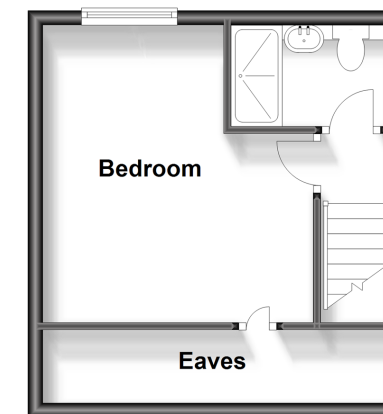
Ground Floor

Approx. 35.6 sq. metres (382.7 sq. feet)



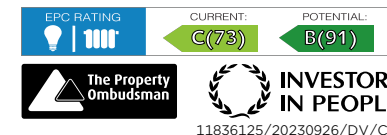
First Floor

Approx. 24.2 sq. metres (260.7 sq. feet)



Call Strood - 01634 716597 ■ wardsofkent.co.uk

- Legal advice should be taken to verify fixtures/fittings, planning, alterations and/or lease details
- Appliances & services are untested, dimensions are approximate and floor plans are not to scale
- Through a Homewise Home For Life Plan people aged 60+ can secure this property for up to 59% less, by purchasing a Lifetime Lease.



11836125/20230926/DV/CM