



**Price**  
**£325,000**

**Freehold**

3x  1x  1x 

**Sealand Drive, Strood,  
Rochester, Kent, ME2**

**OVER 60?**

Secure this property  
for up to **59% less!**

*Wards*  
Helping you move forwards





## Main features

- **3 bedroom terrace house**
- **2 allocated parking spaces**
- **Handy downstairs cloakroom**
- **Closely located to the Medway Leisure park entertainment such as cinema, health club and restaurants**
- **A2/M2 access**

## Accommodation

### GROUND FLOOR

Entrance Hall  
Cloakroom  
Kitchen/Diner: 14'5 x 9'0 (4.40m x 2.75m)  
Lounge: 15'1 x 12'1 (4.60m x 3.69m)

### FIRST FLOOR

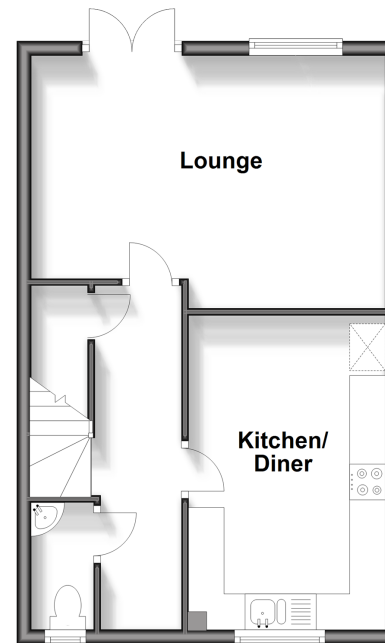
Landing  
Bedroom 1: 13'7 x 9'2 (4.14m x 2.80m)  
Bedroom 2: 13'7 x 9'3 (4.14m x 2.82m)  
Bedroom 3: 7'4 x 6'10 (2.24m x 2.08m)  
Bathroom

### OUTSIDE

Rear Garden  
Allocated Parking For 2 Cars

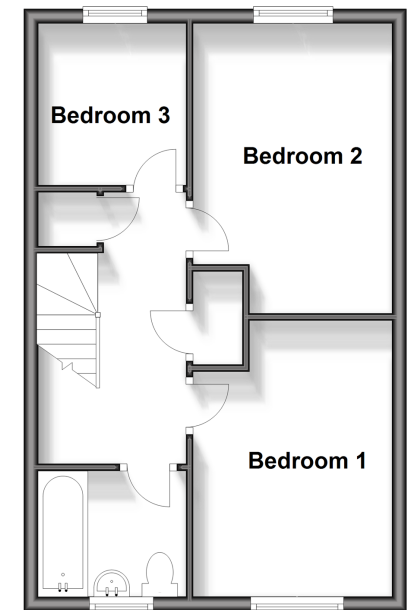
### Ground Floor

Approx. 39.9 sq. metres (429.0 sq. feet)



### First Floor

Approx. 39.9 sq. metres (429.0 sq. feet)



**Call Strood - 01634 716597 ■ [wardsofkent.co.uk](http://wardsofkent.co.uk)**

■ Legal advice should be taken to verify fixtures/fittings, planning, alterations and/or lease details  
■ Through a Homewise Home For Life Plan people aged 60+ can secure this property for up to 59% less, by purchasing a Lifetime Lease.

■ Appliances & services are untested, dimensions are approximate and floor plans are not to scale



11838187/20240412/DV/CM