



Price
£375,000

Freehold

4x  2x  1x 

**St. David's Road,
Allhallows, Rochester,
Kent, ME3**

OVER 60?

Secure this property
for up to **59% less!**

Wards
Helping you move forwards



Main features

- A great family home in a village location
- 2 bathrooms, 29' lounge/diner, conservatory
- Backing onto countryside, close to amenities
- Walk the children to the local primary school
- Parking for up to 3 cars
- Handy utility room

Accommodation

GROUND FLOOR

Entrance Hall
Lounge/Diner : 29'9 x 11'4 (9.07m x 3.46m)
Kitchen : 11'0 x 7'5 (3.36m x 2.26m)
Lean To: 23'9 x 4'1 (7.24m x 1.25m)
Conservatory : 12'0 x 8'8 (3.66m x 2.64m)
Utility Room : 9'6 x 8'1 (2.90m x 2.47m)
Bathroom : 7'5 x 5'9 (2.26m x 1.75m)

FIRST FLOOR

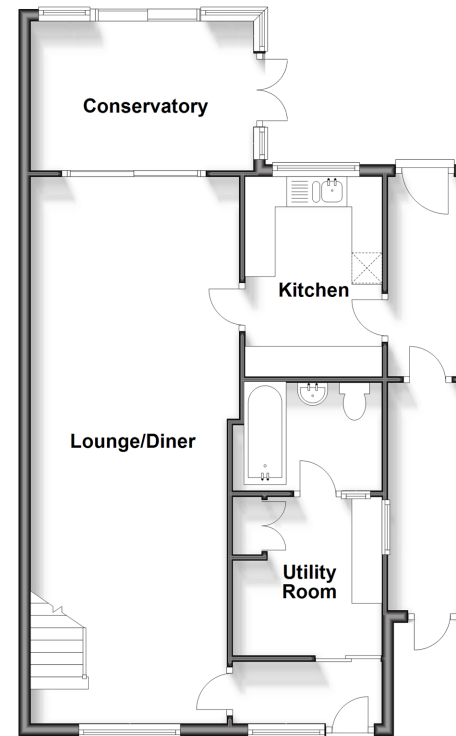
Landing
Bedroom 1 : 14'0 x 10'1 (4.27m x 3.08m)
Bedroom 2 : 11'0 x 8'7 (3.36m x 2.62m)
Bedroom 3: 10'3 x 9'6 (3.13m x 2.90m)
Bedroom 4: 10'5 (3.18m) x 9'2 (2.80m) narrowing to 6'1 (1.86m)
Shower Room : 8'0 x 5'5 (2.44m x 1.65m)

OUTSIDE

Driveway
Front Garden
Rear Garden

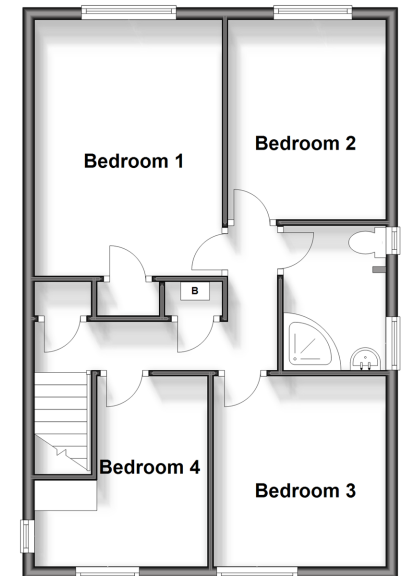
Ground Floor

Approx. 71.8 sq. metres (773.1 sq. feet)



First Floor

Approx. 52.8 sq. metres (568.6 sq. feet)



Call Strood - 01634 716597 ■ wardsofkent.co.uk

- Legal advice should be taken to verify fixtures/fittings, planning, alterations and/or lease details
- Through a Homewise Home For Life Plan people aged 60+ can secure this property for up to 59% less, by purchasing a Lifetime Lease.

- Appliances & services are untested, dimensions are approximate and floor plans are not to scale



11841037/20240423/FA/JC