

OVER 60?

Secure this property
for up to **59% less!**

Guide Price
£400,000

Leasehold

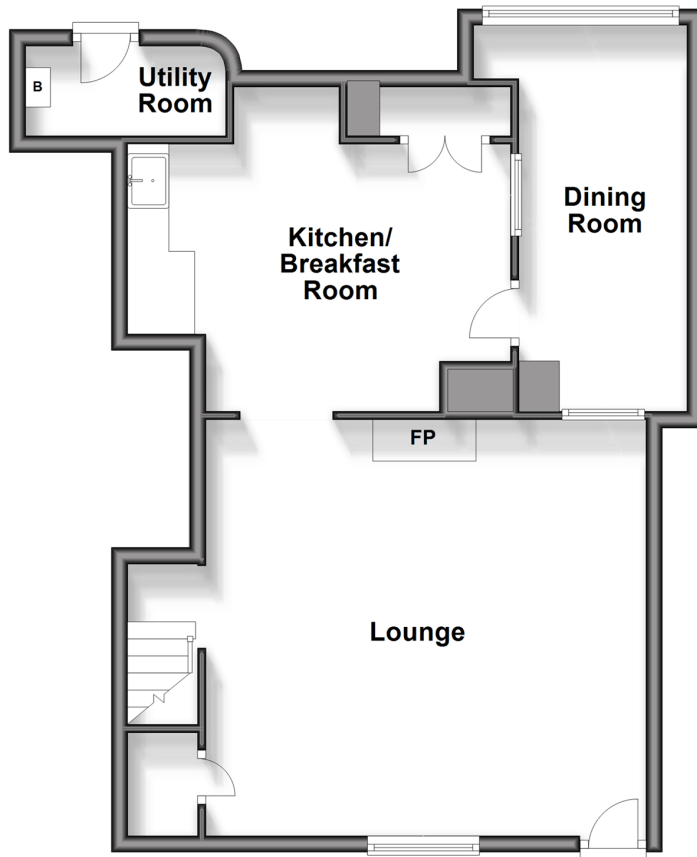
3x  1x  1x 

**Frindsbury Road,
Strood, Rochester, Kent,
ME2**

Wards
Helping you move forwards

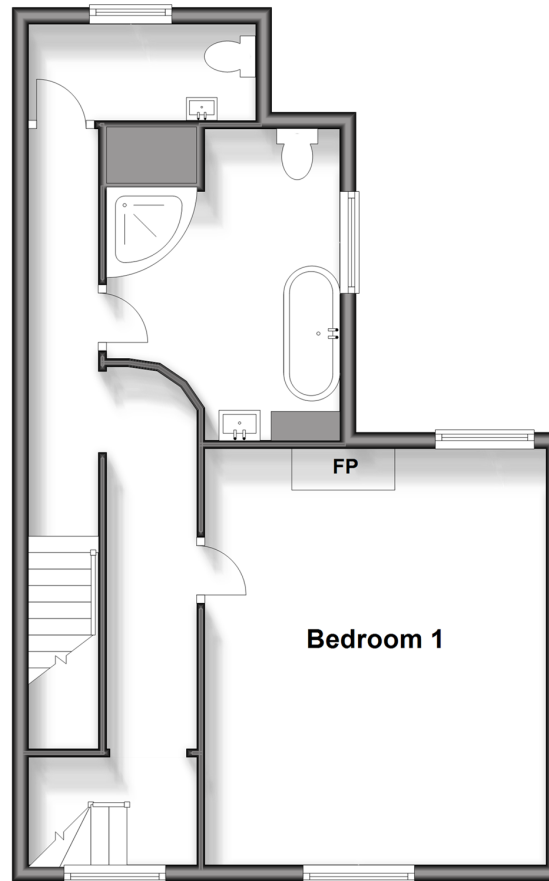
Ground Floor

Approx. 60.5 sq. metres (650.9 sq. feet)



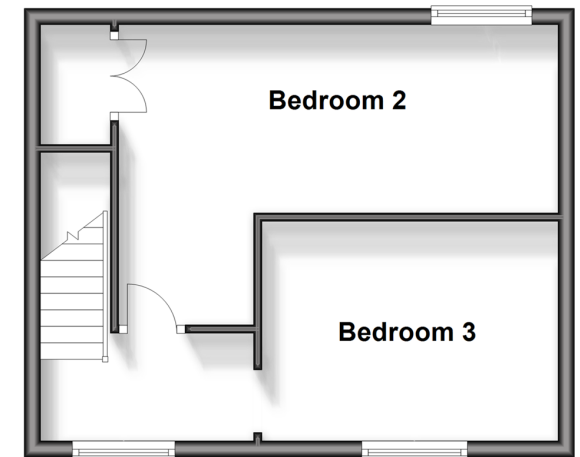
Split Level First Floor

Approx. 49.9 sq. metres (537.6 sq. feet)



Second Floor

Approx. 31.7 sq. metres (341.7 sq. feet)



Accommodation

GROUND FLOOR

Lounge: 20'0 x 16'0 (6.10m x 4.88m)
 Kitchen/Breakfast Room: 12'7 x 12'0 (3.84m x 3.66m)
 Dining Room : 15'3 x 6'8 (4.65m x 2.03m)

SPLIT LEVEL FIRST FLOOR

Landing
 Bedroom 1: 16'0 x 15'0 (4.88m x 4.58m)
 Bathroom : 7'5 x 4'10 (2.26m x 1.47m)
 Cloakroom

SECOND FLOOR

Landing
 Bedroom 2: 17'2 x 12'0 (5.24m x 3.66m)
 Bedroom 3: 12'0 x 9'0 (3.66m x 2.75m)

THIRD FLOOR

Loft Room
 Utility Room
 Rear Garden



Main features

- Stunning Grade II listed home with a wealth of period features
- Large mature private garden
- Double bedrooms, separate dining room
- Handy loft room, utility room
- Medway Maritime secondary school opening Sept 2024
- Within half a mile of historic Rochester
- Easy access to amenities and transport links



Nearest Schools

Primary Schools: English Martyrs' Catholic Primary, Hilltop Primary, Temple Mill Primary
Secondary Schools: King's School, Rochester, Rochester Independent College



Transport Information

Train Stations: Strood 0.8 miles, Rochester 1.5 miles, Chatham 2.3 miles



Address

Frindsbury Road, Strood, Rochester, Kent, ME2



Directions

For directions to this property please contact us.



Wards
Helping you move forwards

Call Strood Branch 01634 716597 ■ wardsofkent.co.uk



■ If buying to let, the energy rating will need to be improved to at least 'E' rating before you can let the property
■ Appliances & services are untested, dimensions are approximate and floor plans are not to scale

■ Legal advice should be taken to verify fixtures/fittings, planning, alterations and/or lease details
■ Through a Homewise Home For Life Plan people aged 60+ can secure this property for up to 59% less, by purchasing a Lifetime Lease.

11842775/20240426/DV/JC