



Price
£270,000

Freehold

2x  1x  1x 

**Elgin Gardens, Strood,
Rochester, Kent, ME2**

OVER 60?

Secure this property
for up to **59% less!**

Wards
Helping you move forwards



Main features

- Ideal for first time buyers looking to get onto the property ladder
- Catchment area for local schools
- Ideally located for access to A2/M2
- Walk to local shops and the sports centre
- Thoughtfully designed living space featuring modern interior and stylish decor
- Rear vehicle access providing parking

Accommodation

GROUND FLOOR

Entrance Hall

Lounge : 14'6 x 10'5 (4.42m x 3.18m)

Kitchen : 13'6 x 10'2 (4.12m x 3.10m)

FIRST FLOOR

Landing

Bedroom 1: 12'6 x 10'5 (3.81m x 3.18m)

Bedroom 2: 12'4 x 8'9 (3.76m x 2.67m)

Bathroom : 7'3 x 5'1 (2.21m x 1.55m)

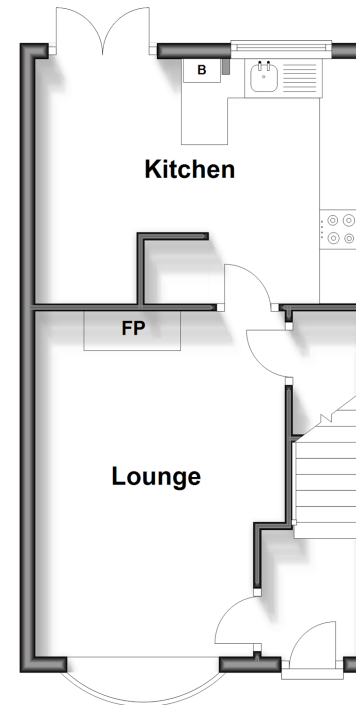
OUTSIDE

Front Garden

Rear Garden

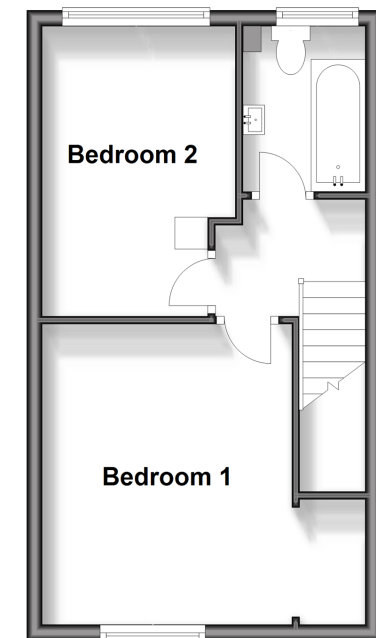
Ground Floor

Approx. 32.1 sq. metres (345.2 sq. feet)



First Floor

Approx. 31.8 sq. metres (342.1 sq. feet)



Call Strood - 01634 716597 ■ wardsofkent.co.uk

- Legal advice should be taken to verify fixtures/fittings, planning, alterations and/or lease details
- Through a Homewise Home For Life Plan people aged 60+ can secure this property for up to 59% less, by purchasing a Lifetime Lease.

- Appliances & services are untested, dimensions are approximate and floor plans are not to scale



11843494/20240111/JC/DM